

SOFA ST. GERMAIN



Code: 1094

Description: design Leonardo Dainelli

cm. W 243 - D 99 - H 52/85

in. W 95.7 - D 39 - H 33.5/20.5

Frame: for the weight-bearing sections, we use multi-ply wood and solid wood.

For the base of the upholstery, high-quality polyether foam is used. Cushion upholstery: high quality polyether foam on webbing.

For the seat cushions, we use a core of high-quality polyether foam with a sectioned down mixture covering (down/acrylic fibers). The underside of the seat cushions is covered with cotton fabric for better air circulation.

This model is only available in leather or in plain-coloured fabrics.

Legs covered with fabric or leather.





Fabrics

S2A00	S2A01	S2A02	S2A03	S2A04	S2A05	S2A06
S2A07	S2A08	S2A09	S2A10	S2A11	S2A12	S2A13
S2A14	S2A15	S2A16	S2A17	S2A18	S2A19	S3A00
S3A01	S3A02	S3A03	S3A04	S3A05	S3A06	S3A07
S3A08	S3A09	S3A10	S3A11	S3A12	S3A13	S3A14



S3A15

S3A16

S3A17

S3A18

S3A19

S3A20

S3A21



S3A22

S3A23

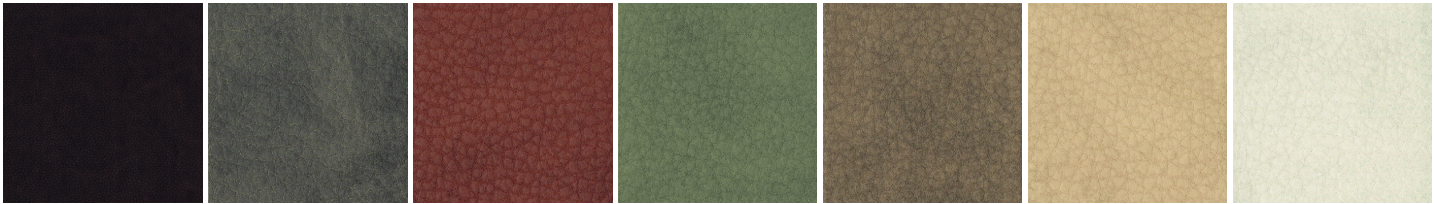
S3A24

S3A25

S3A26

S3A27

S3A28



S4A00

S4A01

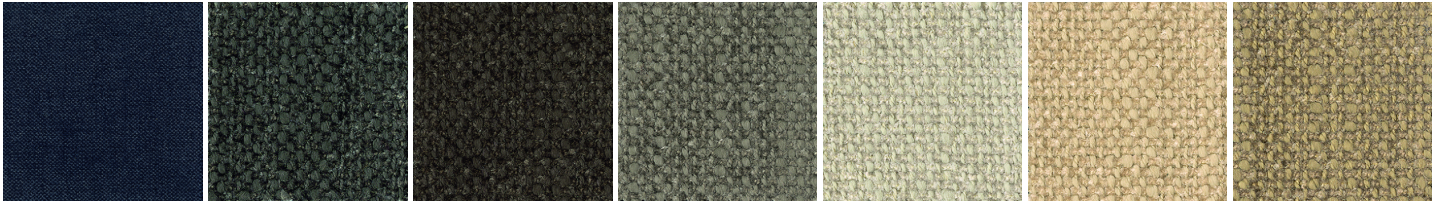
S4A02

S4A03

S4A04

S4A05

S4A06



S4A07

S4A08

S4A09

S4A10

S4A11

S4A12

S4A13



S4A14