

# INTERNAL STRUCTURE

## TECHNICAL MATERIALS

### THE SECRET OF A GOOD NIGHT'S SLEEP LIES IN THE HEART OF OUR MATTRESSES

Magniflex manufactures products made from different types of materials which meet different needs and provide every possible type of specifically designed support. Each product is crushproof due to the high quality of raw materials which remain constant over time.

#### MEMOFORM



Memoform is the most anatomical of the materials used by Magniflex. The Memoform is designed to react to the weight of the body so that it adapts perfectly to each contour of the human figure. This feature provides a sensation of well-being and has beneficial effects on the spine, enabling it to relax.

#### INTERNAL STRUCTURE:

Memoform has a high density open cell structure which allows air to flow freely through the mattress and enables it to mold itself to the pressure exerted by the body, supporting it correctly and providing an extremely beneficial effect.

#### A SPECIAL FORMULA:

Memoform provides an optimal solution that enables the foam to regain its original shape, focusing on the effect of weight rather than heat. The material ensures a constant level of comfort over time and can mold itself rapidly to the contours of the body. By following the body's movements during sleep, Memoform offers an unrivalled night's sleep.

#### MAGNIGEL FOAM



Magnigel Foam is an innovative material that consists of a highly breathable, flexible gel. It is ecological, crushproof, and its high density structure makes it incredibly soft

and comfortable. Magnigel Foam gives the mattress a fresh cool sensation, so you feel as if you are sleeping on a cloud.

### **INTERNAL STRUCTURE:**

Magnigel Foam can be considered an improvement on first generation gels. Its structure has been designed to ensure greater breathability and to stabilize the temperature of mattresses and pillows which are kept fresh and dry on contact with the body.

### **A MORE STABLE TEMPERATURE:**

Results of times for heating and cooling. Specifically designed tests have demonstrated that Magnigel Foam can keep the temperature of the mattress constant, heating up more slowly and cooling down more rapidly than other foams.

### **GREATER BREATHABILITY:**

The breathability values proves to be higher than for traditional polyurethanes and this ensures improved air flow and a sensation of greater freshness.

## **MAGNIFOAM**



This foam has a high density microcellular structure that combines elasticity and breathability. Due to its special molecular structure, Magnifoam is available in two versions: a softer version (Eliosoft) and a firmer version (Elioform).

## **MALLOWFOAM**



The foam layer with mallow extract provides soft, comfortable support. Mallow has anti-inflammatory, calming and soothing properties that make this material a source of well-being for the nervous system.

## **LATEX**



Latex is produced from the bark of a tropical plant and then expanded with air, creating a malleable material made up of billions of open cells, connected by micro channels. It also has excellent ergonomic and elastic properties.

## **SPRINGS**



The springs are made of 2.2 tempered steel to ensure flexibility and strain strength. For the ideal use of a spring mattress, a firm support (with or without slats) is required.

## **MICRO-SPRINGS**



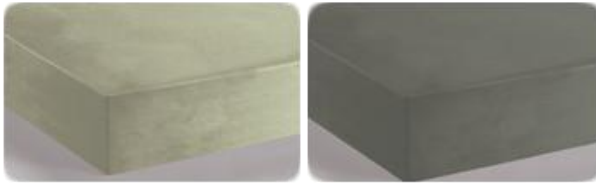
Compared to traditional springs, these are smaller so there are more springs inside the mattress. The more micro-springs inside the mattress, the more contact points and added support, which gives our customers an even more ergonomic resting experience.

## **MEMOFORM HD**



Memoform HD is an innovative, high density, visco-elastic foam that is extremely firm. This feature ensures that the foam has a greater capacity to mold itself to the contours of the body, supporting the figure perfectly. This provides unrivalled comfort and ensures a better posture for the back. Its toughness and extremely long life make this material ideal for the most sophisticated and technologically advanced products.

## **MAGNIFOAM BREEZE**



Magnifoam Breeze is a polyurethane foam that is breathable, extremely tough and crushproof over time. It is available in the Eliosoft version, providing soft support, and the Elioform version, providing firm support. The material is enriched with eucalyptus extract to improve the sensation of well-being and to keep the body cool.

## **ECOGREEN**



Ecogreen is a techno-natural, flexible and orthopedic material that helps to ensure the correct alignment of the shoulders, the back and the limbs. Its cellular structure, based in water and essential oils, stimulates air flow and keeps the mattress cool and dry.

## **GEOMEMORY**



Geomemory is an anatomical material enriched with Aloe Vera or Soya extracts that molds itself naturally to the contours of the body and provides independent support for the head, shoulders, bust, arms, pelvis and legs.

## **SUPER SOFT FIBER**



The filling is made of super soft fiber which is incredibly soft and breathable, providing delicate, comfortable support for the whole body. Its special composition

provides a sensation of immense well-being and improves the perception of comfort during sleep.

## **MEMOSOFT**



Memosoft is a comfortable, anatomical material that embraces the body, offering a sensation of extreme softness and incredible comfort. Its qualities are further enhanced when combined with the foam plates made of Memoform, Elioform or Eliosoft, offering an even more delicate support.

## **NATURAL MATERIALS**

### **CAMELHAIR WOOL**



Camel fiber is ideal for a winter mattress filling since it has a structure that retains heat. Its hygroscopic properties absorb the moisture released by the body and help evaporation, keeping the micro climate consistently dry and pleasant.

### **CASHMERE**



Cashmere is a very soft animal fiber that withstands dirt and, above all, dust. Its extraordinary capacity to trap air gives it a high degree of heat insulation which ensures constant warmth even in winter months.

### **WOOL**



Wool is the most ancient animal fiber, it has heat-regulating properties and excellent breathability which allow continuous airflow leaving the skin cool and dry. Another significant property of wool is that it absorbs the moisture in excess, thus keeping a constant body temperature during rest.

## **MERINO WOOL**



Merino wool is shorn from the best breeds of sheep and is one of the highest quality animal fibers. Extremely fine and soft to the touch, it has heat-regulating properties and excellent breathability which leaves the skin free to breathe.

## **HORSEHAIR**



Horsehair is a fiber that has been used since antiquity to stuff beds and mattresses due to its incredible resiliency and elasticity. Horsehair does not lose its natural flexibility and rapidly regains its original shape, ensuring the same degree of comfort over time. Thanks to its hygroscopic qualities, the fiber absorbs moisture and ensures that the body remains cool and dry.

## **LINEN**



Linen is the most suitable fiber for filling the summer side of a mattress because it offers a fresh sensation when in contact with the skin. Thanks to its molecular structure, linen manages to absorb the moisture released by the body during sleep, enabling it to evaporate.

## **COTTON**



Cotton is a soft yet hardwearing plant fiber. The most salient characteristics of cotton are its breathability, which keeps it fresh when in contact with the skin and its structure which absorbs a great deal of moisture to help keep the skin dry.

## **SILK**



Silk is certainly the finest and strongest natural fiber, with great mechanical strength and elasticity, even though it stays soft and pleasant to the touch. One of the most loved fabrics in the world, silk is an excellent insulator that keeps you warm in winter and cool in the summer.

## **GOOSE FEATHERS**



Due to its chemical and physical composition, goose feathers can regulate the body's microclimate. They hold a large volume of air and keep the body's temperature constant with respect to the outside environment, leaving the skin free to breathe. Goose feathers consist of clusters of filaments which grow from a central quill, ensuring elasticity and lift.

## **GOOSE DOWN**



Goose down controls the body's microclimate, keeping the body at a constant temperature and leaving the skin free to breathe. Due to its structure, which is smaller

and softer than feathers, goose down is light but provides enough volume to give incredibly comfortable support.

## **ROLLOBOULES FIBER**



Lightness, bulk and elasticity are the most important features of rolloboules fiber. The way fiber is distributed within the pillows and toppers ensures an incredibly tough, allergenic product. Its special structure provides an incredibly soft, feather-like comfort.

# **FABRICS AND TREATMENTS**

## **TECHNICAL MATERIALS**

## **NATURE AND TECHNOLOGY COMBINE TO ENSURE A GOOD NIGHT'S SLEEP**

Magniflex has always searched for solutions to improve the quality of sleep. In each type of fabric, the technological fibers combined with the synthetic fibers to ensure the highest level of breathability, providing a pleasant sensation of freshness. The technical fabrics are tear proof and have a range of different properties: they are anti-bacterial, anti-fungal, anti-microbial, crease-proof, anti-static and fire retardant. The fabrics are made from natural fibers and offer real health benefits. The fabrics are breathable and hypoallergenic, which ensures the products are non-toxic and hygienic. The use of natural substances and plant fibers is regulated by standards that certify that the products are of high quality and environmentally sustainable, both during the extraction and manufacturing phases.

## **OUTLAST®**



OUTLAST® is a heat-regulating fabric especially designed for astronauts' space suits and contains millions of spheres made from a special wax that melts at a temperature



of 96 degrees Fahrenheit. When the body temperature rises, the excess heat is absorbed but when the temperature drops below the melting point, the spheres regain their shape and firmness and release the accumulated heat.

## **COOLMAX®**



COOLMAX® is a high-performance fabric that uses an innovative fiber that stabilizes the body's moisture levels. Due to its special properties, COOLMAX® checks and regulates both skin temperature and body hydration and dries more rapidly than other fabric, keeping the body dry and cool.

## **VISCOSE**



Viscose is a soft, silky fabric made from the purified cellulose of trees. It is extremely soft and silky and absorbs moisture rapidly, ensuring highly breathable mattresses and pillows.

## **SATIN VISCOSE**



The viscose satin cover combines the properties of viscose, which has a soft and silky feel, with the quality of satin, an elegant fabric that has a glossy appearance. Together,

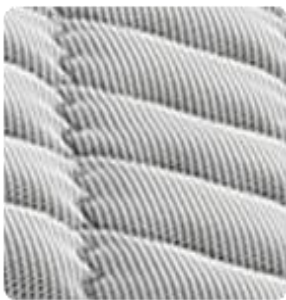
they have an excellent moisture wicking capacity, which facilitates the breathability of the mattress.

### **3D BAND**



This special three dimensional hi-tech fabric is used on the outer layer of the mattress. Its high level of breathability reduces the level of internal humidity within the mattress, neutralizing odors and the formation of mold and ensuring increased levels of hygiene.

### **ANTI-SUFFOCATION FABRIC**



The anti-suffocation fabric with breathable 3D fibers have a highly breathable structure. The fabric promotes air circulation within the mattress simply by activating the handy anti-suffocation feature, which makes it especially suitable for young children.

## **NATURAL MATERIALS**

### **WOOD**



This pure cellulose yarn is ecological, healthy and is made from a careful mixture of timbers. It differs from other cellulose fabric due to the soft feel and its heat-regulating, odour-proof properties and its breathability.

### **BAMBOO FIBRE**



Bamboo fibre is entirely covered with micro-slits to allow excellent air flow and moisture absorption, ensuring that the body is cool and dry during sleep. It is also extremely tough and long lasting.

### **ORGANIC COTTON**



The linings are made from organic cotton, a fresh material that is pleasant to the touch and ensures great breathability. These 100% organic fabrics aid the biologic functions by balancing the biorhythm during sleep.

### **100% COTTON**



Cotton is a plant fiber known for its hygroscopic and anti-static properties as well as its breathability. The material has a high absorbency rate and is soft to the touch and comfortable, enabling the skin to breathe and ensuring a refreshing night's sleep.

## **PERCALE**



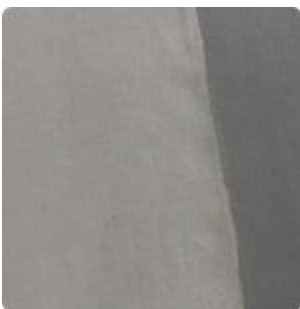
Percale is a material of natural origin, created from yarns combed from very high quality cotton. It is synonymous of style and elegance and, when in contact with the skin, it always offers a pleasant, velvety feeling. Percale is characterized by lightness and resistance; qualities that maintain high performance throughout time.

## **COTTON SATIN**



The excellence of satin, which is known for its gloss and softness, is combined with the high quality of pure cotton, a hygienic and extremely durable material. The result, is a precious and elegant fabric that retains an extremely soft texture and extra comfort.

## **COTTON CANVAS**



Cotton canvas is made with 100% of the highest quality cotton and characterized by softness and extreme comfort. Thanks to its hygroscopic properties, cotton is extremely breathable and absorbent, and is particularly recommended for a regenerating sleep.

## **ALOE VERA**



Aloe Vera has regenerating properties thanks to its anti-inflammatory features, which positively influence significant habits such as our sleep, when we wake up and our attention.

## **COTTON MIX**



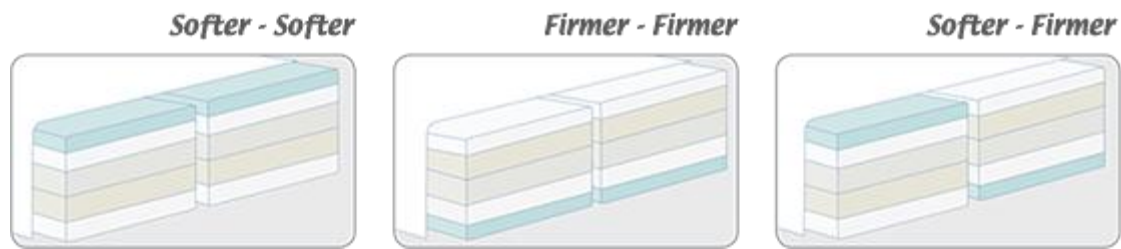
Cotton mix is a fiber known for its highly breathable properties. The material is particularly soft to the touch and lasts well throughout time.

# **TECHNOLOGIES**

## **DUAL CORE TECHNOLOGY: SLEEP TOGETHER, WITHOUT COMPROMISE**

The build of each individual determines the perception of their comfort and the support preference in their mattress. Dual Core is the innovative technology that Magniflex developed to allow sleep partners to share their mattress without compromising anything in terms of comfort.

Magniflex mattresses with dual core have two separate cores with different comfort and support levels that can easily be adjusted by unzipping the mattress cover and simply flipping either of the two inside cores. It's just like a custom mattress without the wait or expense of a made-to-order bed. The dual core technology offers 3 different combinations:



### Two different comforts in only one mattress:

- **double comfort option**, each side of the mattress has a different comfort and support level
- **"softer" side** for gentler support
- **"firmer" side** for firmer support
- **separate, flippable cores** to meet each individual's optimal comfort needs
- **perfect harmony for sleep partners**, without compromise.

### Presentation of Magniflex Dual Core



[Watch the video](#)

## GREAT BREATHABILITY AND DIVERSIFIED SUPPORT

This special technology ensures perfect breathability and optimum dissipation of excess moisture and heat through the holes in the foam core. The constant airflow within both the mattress and the pillow allows the appropriate thermal exchange between the foam core, the fabric and the body.

Some areas of our body such as head, chest and legs weight more than other, therefore unless they find the proper flexibility on the mattress support, they may receive tension which will reflect on the alignment of the spinal column. In the mattress, this particular technology provides diversified and optimal support to different areas of the body, namely head, shoulders, back, legs and ankles.



## MASSAGING

The massaging technology regenerates the micro-circulation and exerts a constant massage during sleep, thus ensuring a continuous feeling of well-being and comfort. This special technology provides diversified support to the 5 areas of the body: head, shoulders, back, legs and ankles. It balances the body weight throughout the length of the mattress and provides the appropriate support to each part of the body.



## CHECKERED STRUCTURE

The checkered structure offers different support for each of the 5 body areas (head, shoulders, back, legs and ankles), splitting and balancing body weight throughout the length of the mattress and providing the right support to every section of the body.

