

# FINITURE

I colori dei legni, delle laccature, dei tessuti e delle pelli presenti in questo catalogo sono suscettibili dei procedimenti di stampa. Fa fede il campionario dell'azienda. Ivano**Antonello**Italia®. si riserva la facoltà di modificare in qualunque momento e senza preavviso le caratteristiche tecniche (misure, finiture, tessuti e pelli) dei suoi prodotti.

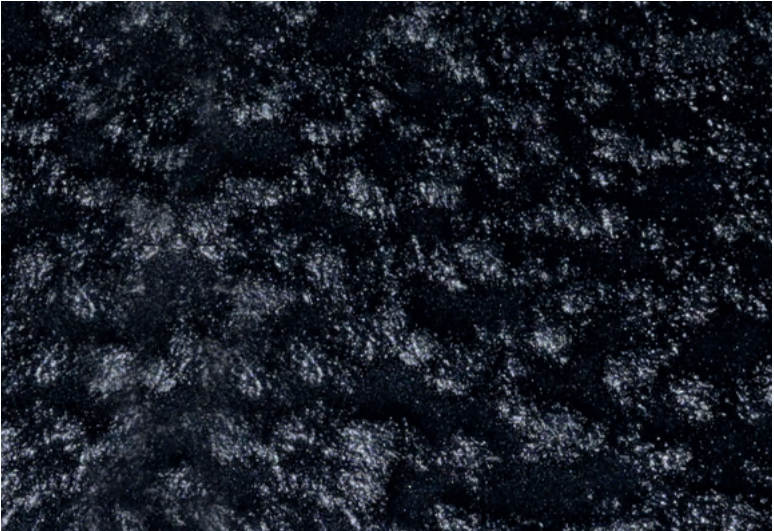
Wood, lacquer, fabric and leather colours are not binding and may vary due to printing. Please refer to the company sets of samples. Ivano**Antonello**Italia® reserves the right to modify the technical specifications of the products (sizes,finishes,leather and fabrics) featured in this catalogue at any time and without prior notice.

VETRO COTTO FORGIATO  
FORGED ANNEALED GLASS

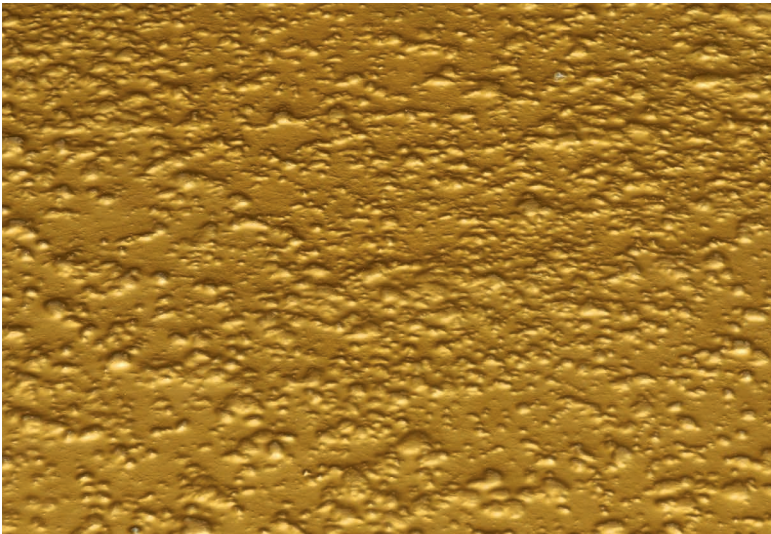
## STANDARD VERSION



Bianco Brillante\_Bright White



Nero Brillante\_Bright Black



Oro Brillante\_Bright Gold

## LUXURY VERSION



Blu argentato\_Blue with Silver back



Bronzo retro argentato\_Bronze with Silver back

Essendo un vetro cotto forgiato un materiale naturale, potrebbe presentare caratteristiche estetiche e lievi differenze di colore.  
Being a forged annealed glass a natural material, it may have aesthetic characteristics and slight differences in color.

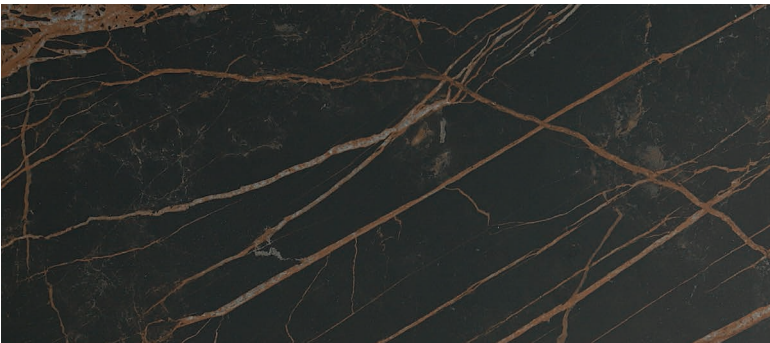




Statuario\_Statuary



Calacatta Oro\_Calacatta Gold



Noir Desire\_Noir Desire



Calacatta Luxe\_Calacatta Luxe



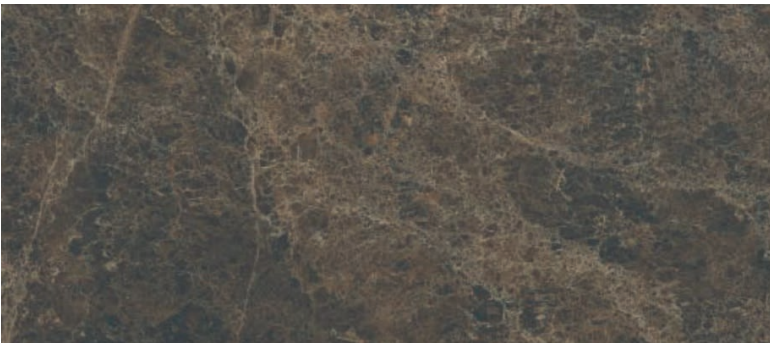
Calacatta Extra Satin\_Calacatta Extra Satin



Iron Corten\_Iron Corten



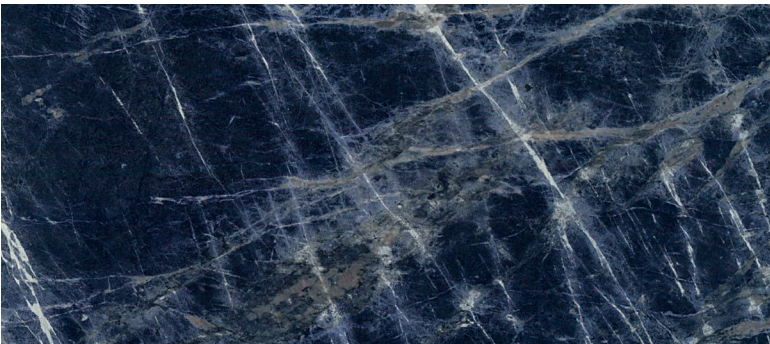
Zaha Stone\_Zaha Stone



Emperador Extra\_Emperador Extra



Krater\_Krater



Sodalite lux\_ Sodalite lux



Wengè\_Wengè



Noce Canaletto\_Canaletto Walnut



Rovere Patinato Grigio\_Grey Oak



Rovere Naturale Vintage\_Vintage Natural Oak



Rovere Affumicato\_Smoked Oak



Rovere Naturale\_ Natural Oak



LEGNO CON EFFETTO METALLICO

WOOD WITH METAL EFFECT



Metal Bronze\_Metal Bronze



Metal Steel\_Metal Steel

METALLO CON VERNICIATURA A POLVERE EPOSSIDICA

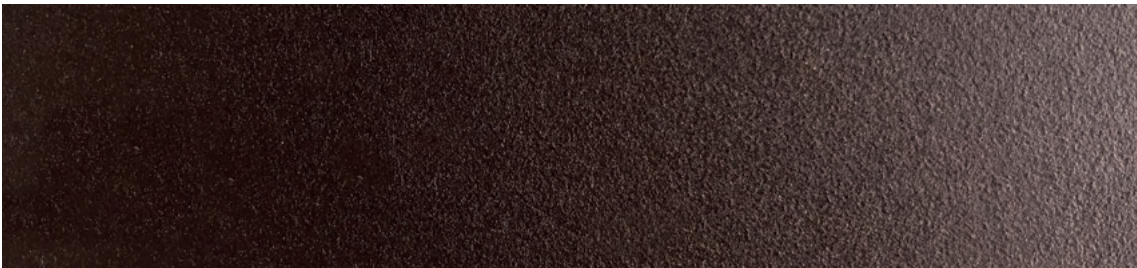
METAL WITH EPOXY PAINTED POWDER



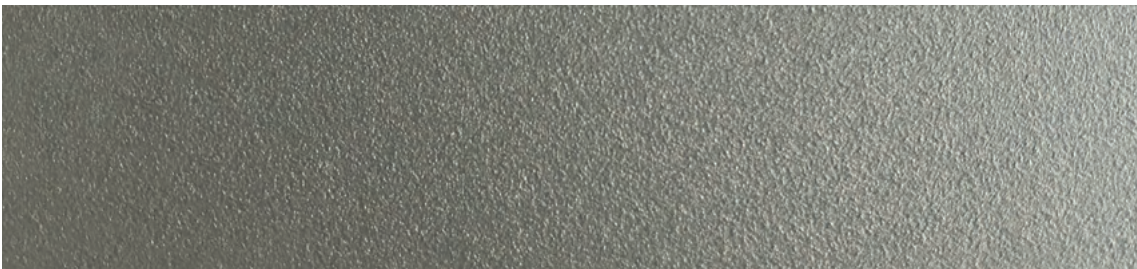
Genere Opaco **M24**  
Matt Ash Grey



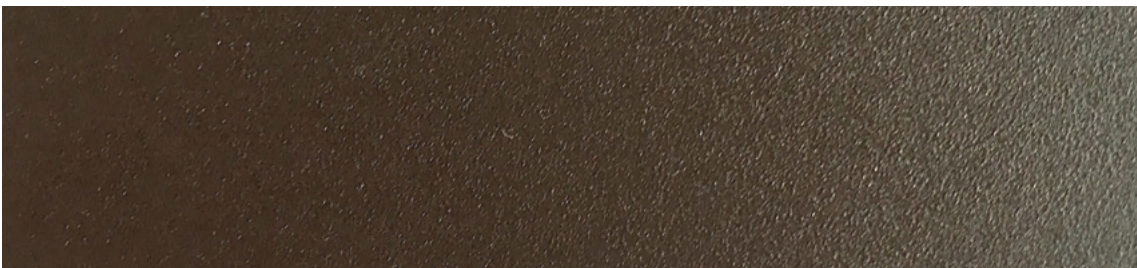
Quartz **M29**  
Quartz



Rame **M32**  
Copper



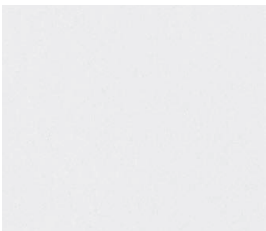
Titanio **M35**  
Titanium



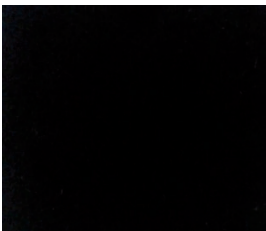
Bronzo Opaco **M38**  
Matt Bronze

METALLI

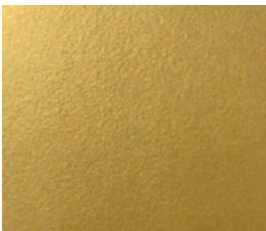
METAL



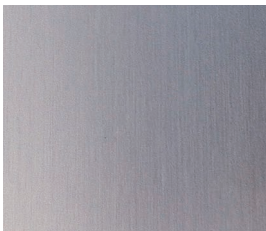
Bianco Opaco **M10**  
Matt White



Nero Opaco **M5**  
Matt Black



Verniciato Oro Brillante **M40**  
Bright Gold painted



Alluminio Anodizzato **M12**  
Anodized Aluminium



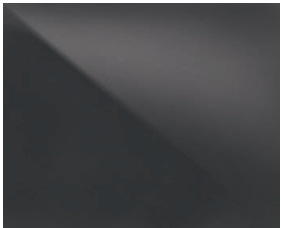
Cromo Lucido **M14**  
Shining Chrome



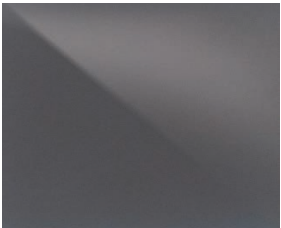
LACCATI LUCIDI  
SHINING LACQUERED WOOD



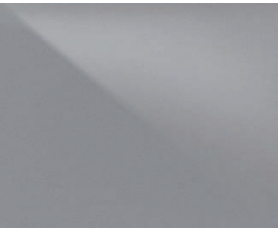
Nero **1073**  
Black



Grigio Scuro **1022**  
Dark Grey



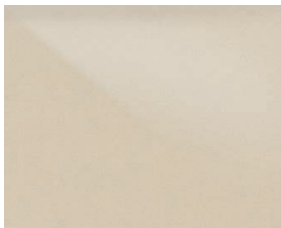
Grigio Cenere **1033**  
Ash Grey



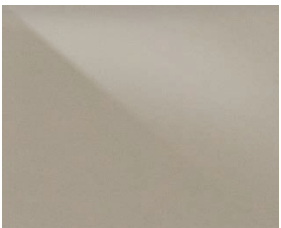
Grigio Chiaro **1030**  
Light Grey



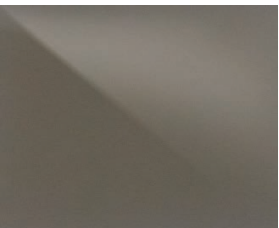
Bianco **1071**  
White



Crema **1092**  
Cream



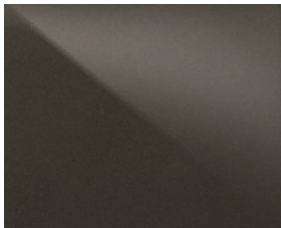
Tortora **1079**  
Dove Grey



Fango **1006**  
Mud



Moka **1091**  
Dark Brown

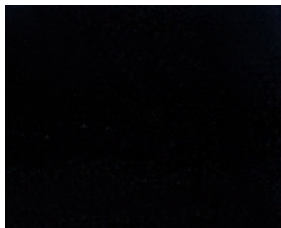


Bronzo **1038**  
Bronze

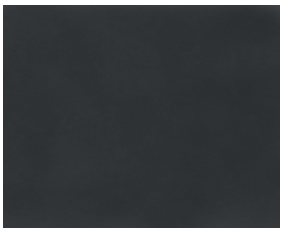


Rosso **1089**  
Red

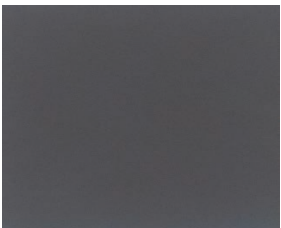
LACCATI OPACHI  
MATT LACQUERED WOOD



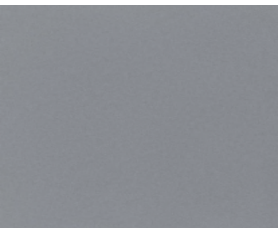
Nero **4073**  
Black



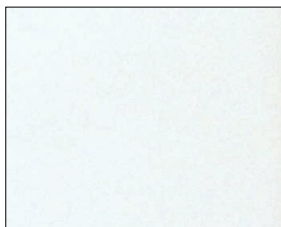
Grigio Scuro **4022**  
Dark Grey



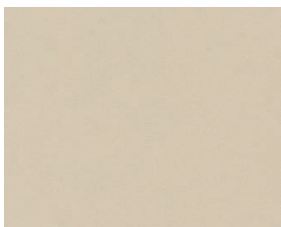
Grigio Cenere **4033**  
Ash Grey



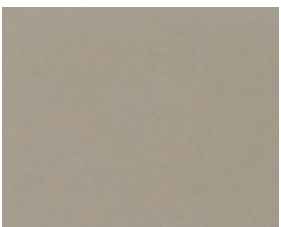
Grigio Chiaro **4030**  
Light Grey



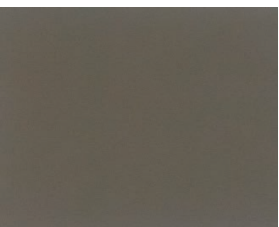
Bianco **4071**  
White



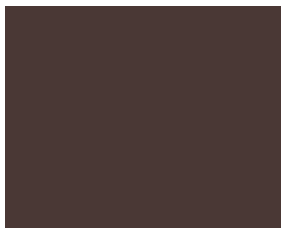
Crema **4092**  
Cream



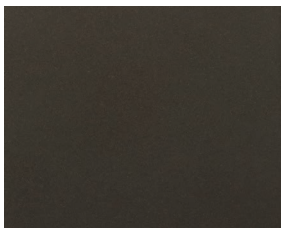
Tortora **4079**  
Dove Grey



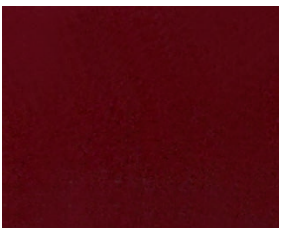
Fango **4006**  
Mud



Moka **4091**  
Dark Brown



Bronzo **4038**  
Bronze



Rosso **4089**  
Red

CRISTALLI VERNICIATI LUCIDI  
SHINING PAINTED GLASS



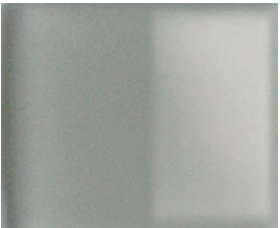
Nero **3073**  
Black



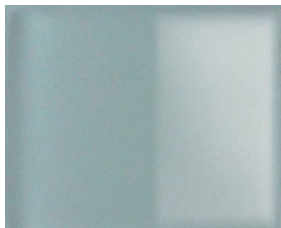
Grigio Scuro **3022**  
Dark Grey



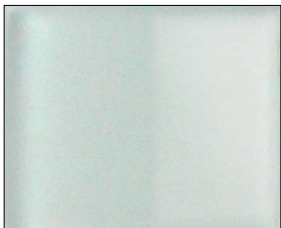
Grigio Cenere **3033**  
Ash Grey



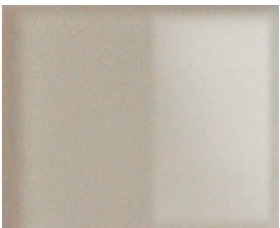
Grigio Chiaro **3030**  
Light Grey



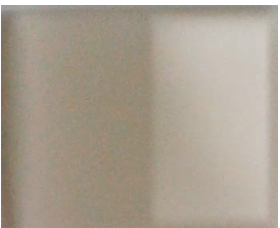
Fumè **3022**  
Smoked Grey



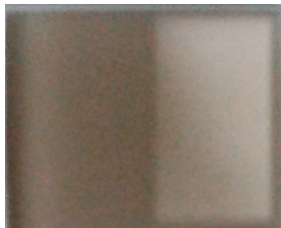
Bianco **3071**  
White



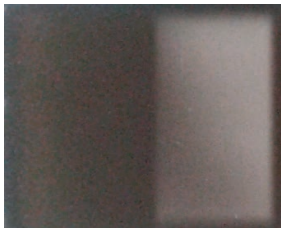
Crema **3092**  
Cream



Tortora **3079**  
Dove Grey



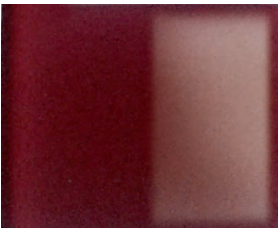
Fango **3006**  
Mud



Moka **3091**  
Dark Brown

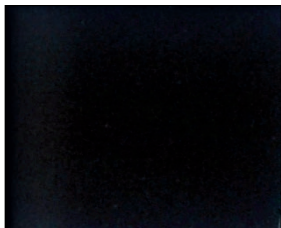


Bronzo **3038**  
Bronze

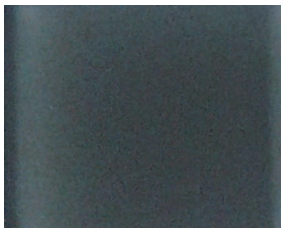


Rosso **3089**  
Red

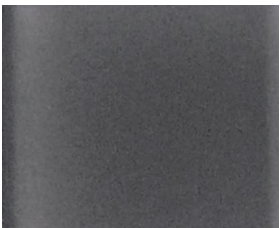
CRISTALLI ACIDATI VERNICIATI OPACHI  
MATT PAINTED SATINED GLASS



Nero **5073**  
Black



Grigio Scuro **5022**  
Dark Grey



Grigio Cenere **5033**  
Ash Grey



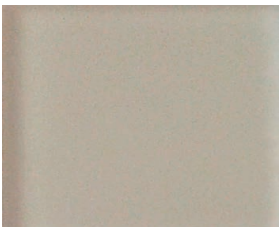
Grigio Chiaro **5030**  
Light Grey



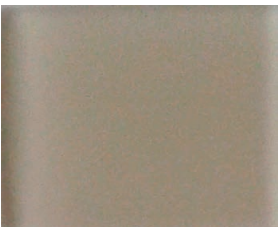
Fumè **5022**  
Smoked Grey



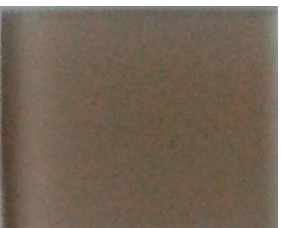
Bianco **5071**  
White



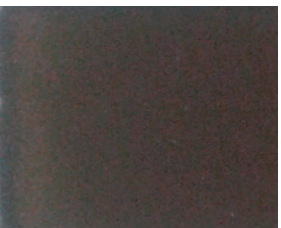
Crema **5092**  
Cream



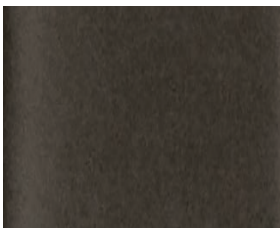
Tortora **5079**  
Dove Grey



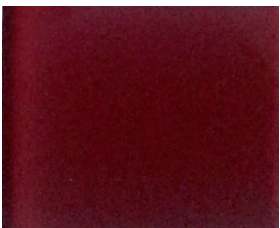
Fango **5006**  
Mud



Moka **5091**  
Dark Brown



Bronzo **5038**  
Bronze



Rosso **5089**  
Red



PELLE  
SOFT LEATHER



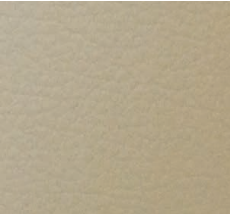
Bianco **A000**  
White



Bianco Panna **A130**  
Creamy White



Crema **A028**  
Cream



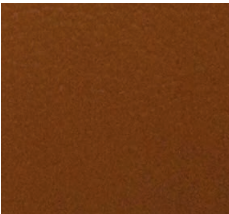
Avorio **A250**  
Ivory



Tortora **A264**  
Dove Grey



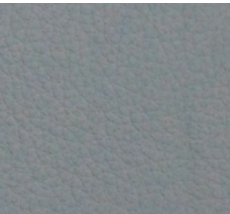
Giallo **A260**  
Yellow



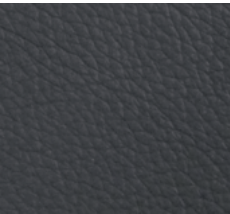
Naturale **A060**  
Natural



Perla **A033**  
Pearl



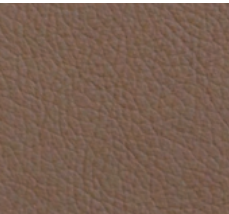
Grigio Chiaro **A290**  
Light Grey



Ardesia **A275**  
Slate



Bronzo **A380**  
Bronze



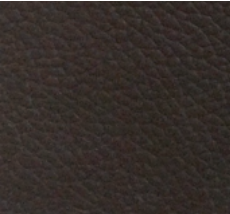
Marrone Chiaro **A278**  
Light Brown



Ocra Bruno **A325**  
Brown Ochre



Marrone **A340**  
Brown



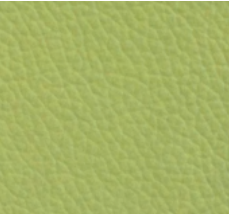
T. di Moro **A330**  
Dark Brown



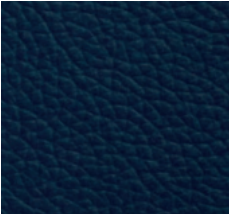
Arancione **A137**  
Orange



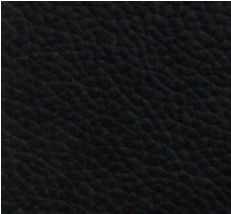
Rosso **A090**  
Red



Verde **A359**  
Green



Avio **A315**  
Aviation Blue



Nero **A150**  
Black

ECOPELLE  
SYNTHETIC LEATHER



Bianco **SI 01**  
White



Crema **SI 02**  
Cream



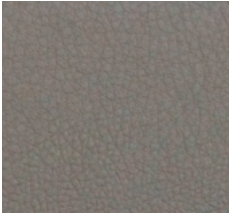
Avorio **SI 04**  
Ivory



Giallo **SI 11**  
Yellow



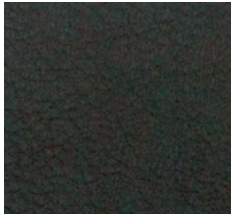
Tortora **SI 05**  
Dove Grey



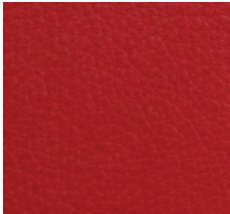
Fango **SI 26**  
Mud



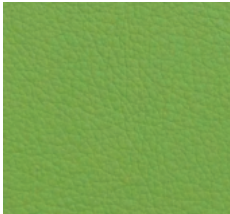
Marrone **SI 07**  
Brown



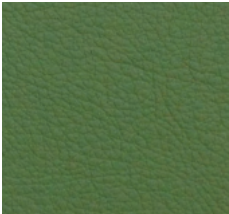
T. di Moro **SI 08**  
Dark Brown



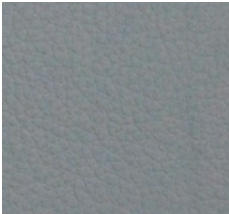
Rosso **SI 13**  
Red



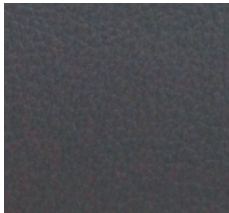
Verde **SI 17**  
Green



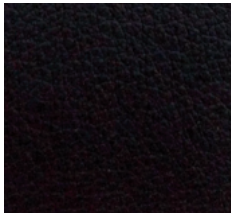
Verde Oliva **SI 18**  
Olive Green



Grigio Chiaro **SI 36**  
Light Grey



Grigio **SI 23**  
Grey

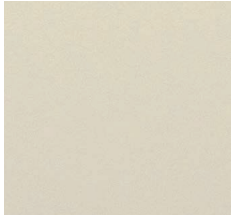


Nero **SI 24**  
Black

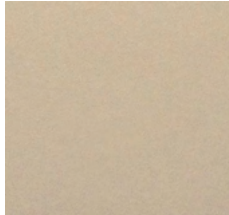
CUOIO  
HIDE LEATHER



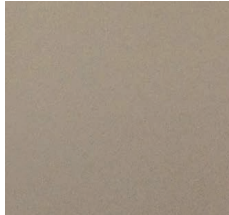
Bianco **71**  
White



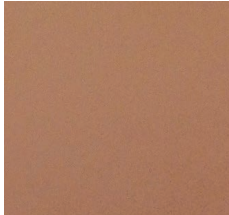
Latte **74**  
Milk



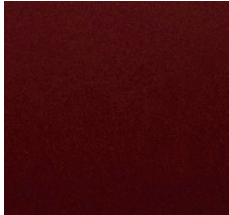
Avorio **12**  
Ivory



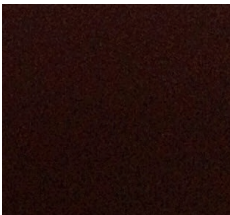
Tortora **79**  
Dove Grey



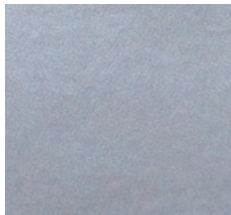
Naturale **32**  
Natural



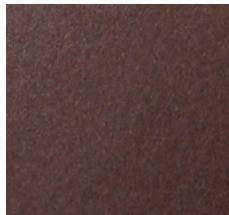
Mattone **16**  
Brick Red



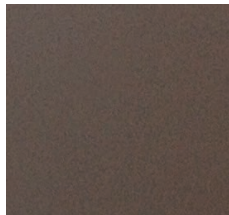
Marrone **20**  
Brown



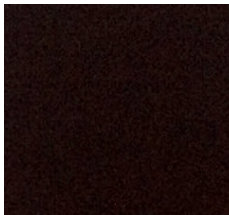
Argento **96**  
Silver



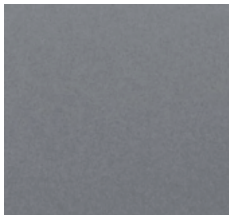
Bronzo **31**  
Bronze



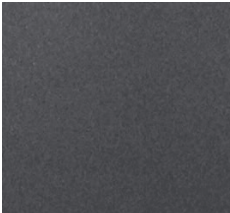
Ocra Bruno **38**  
Brown Ochre



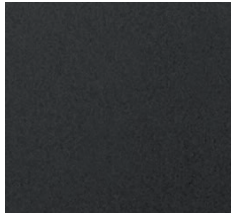
T. di Moro **91**  
Dark Brown



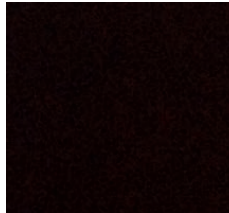
Grigio Chiaro **30**  
Light Grey



Grigio Piombo **37**  
Lead Grey



Ardesia **26**  
Slate



Nero **73**  
Black



Rosso **89**  
Red

- PULIZIA E MANUTENZIONE

Per la normale pulizia utilizzare solamente un panno morbido e asciutto. Eventuali macchie si possono eliminare agendo con un panno umido e utilizzando prodotti neutri. Non usare solventi (es. alcool). Solo per macchie più resistenti utilizzare prodotti specifici per la pelle facendo inizialmente una prova in una zona non visibile per verificarne l'efficacia. Attenzione: i colori dei campionari sono indicativi e si possono riscontrare lievi tolleranze tra i campioni ed i prodotti finiti.

- CLEANING AND MAINTENANCE

Dust with a soft and dry cloth for the normal clearing. Any stains can be removed with a wet cloth and using delicate products. Do not use solvents (i.e. alcohol). Only for more resistant stains use specific products for the soft leather making an initially test on a not visible area to verify its effectiveness.

Warning: since the samples colors are indicative, you can find light tolerances between samples and final products.

- NETTOYAGE ET ENTRETIEN DU CUIR

Pour un nettoyage normal, n'utiliser qu'un chiffon doux et sec. Les éventuelles tâches peuvent s'enlever à l'aide d'un tissu humide et en utilisant des produits neutres. Ne pas utiliser de solvants (par exemple alcool). Pour les taches les plus résistantes, utiliser des produits spécifiques pour le cuir en ayant auparavant fait un test sur une zone non apparente pour en vérifier l'efficacité.

Attention: les couleurs des échantillonnages ne sont qu'indicatives et des légères différences peuvent apparaître entre les échantillons et les produits finis.

- LIMPIEZA Y MANTENIMIENTO

Para su limpieza, utilizar un paño de algodón seco. Para otras manchas, utilizar un paño mojado y productos neutros. Nunca utilizar disolventes (por ejemplo el alcohol). Solo para manchas mas difíciles emplear productos específicos para la piel haciendo una prueba inicial sobre una zona no visible para verificar la eficacia.

Atencion: los colores del muestrario son indicativos y pueden tener muy ligeras variaciones entre la muestra y el producto finido.

- LEDERPFLEGE

Benutzen ein weichen und trockenen Tuch für die normale Reinigung. Stärke Flecke müssen mit einem Neutralprodukt behandelt und mit einem sauberen Tuch nachgerieben. Benutzen Sie kein Lösungsmittel (z.B. Alkohol). Nur für mehr widerstandsfähige Flecke gebrauchen spezifische Produkte für das weiche Leder, das zuerst Test auf nicht sichtbares Gebiet macht, um sein Wirksamkeit nachzuprüfen.

Achtung: Die Musterfarben sind ungefähr und es können leichte Toleranzen zwischen Musterfarben und den fertigen Waren auftreten.

- L'ecopelle è un prodotto Made in Italy e ha superato le sottoelencate prove per la resistenza alla fiamma secondo gli standard europei.

EN 1021-2/93-BS 5852-1/79-BS 5852/90 Sezione 4-crib5

UNI 9175/87 E 9175 FA-1/94 CLASSE 1.IM

- The synthetic leather is a Made in Italy product and it passed the here below tests concerning the fire resistance according to the European standards.

EN 1021-2/93-BS 5852-1/79-BS 5852/90 Section 4-crib5

UNI 9175/87 E 9175 FA-1/94 CLASS 1.IM

- Le cuir mince synthétique est un produit Made in Italy et a passé les tests de résistance au feu selon les normes européennes (ci-dessous indiqués).

EN 1021-2/93-BS 5852-1/79-BS 5852/90 Section 4-crib5

UNI 9175/87 E 9175 FA-1/94 CLASSE 1.IM

- La piel sintética es un producto Made in Italy que ha superado las pruebas que se enumeran a continuación de resistencia a la llamas según las normas europeas.

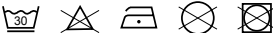
EN 1021-2/93-BS 5852-1/79-BS 5852/90 Sección 4-CRIB5

UNI 9175/87 E 9175 FA-1/94 CLASE 1.IM

- Das synthetische Weichleder ist ein Produkt Made in Italy und hat die unten genannten Prüfungen für Flammwidrigkeit nach europäischen Standards bestanden.

EN 1021-2/93-BS 5852-1/79-BS 5852/90 Abschnitt 4-CRIB5

UNI 9175/87 E 9175 FA-1/94 CLASS 1.IM





SMART CAT. A

SMART CAT.A

90% CO 10% AF  
Idrorepellente / Water repellent \_ Antimacchia / Stain - Resistant \_ Traspirante / Transpirant



**CT 33 A**  
Crema  
Cream



**CT 17 A**  
Bianco  
White



**CT 08 A**  
Beige  
Beige



**CT 39 A**  
Tortora  
Dove Grey



**CT 47 A**  
Tabacco  
Tobacco Brown



**CT 44 A**  
Cammello  
Camel



**CT 43 A**  
Marrone  
Brown



**CT 28 A**  
T. di Moro  
Dark Brown



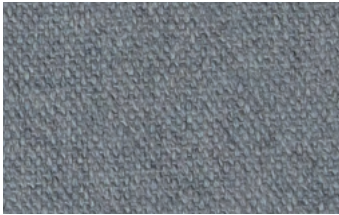
**CT 67 A**  
Glicine  
Wisteria



**CT 15 A**  
Blu  
Blue



**CT 02 A**  
Azzurro  
Light Blue



**CT 37 A**  
Grigio Chiaro  
Light Grey



**CT 05 A**  
Grigio Scuro  
Dark Grey



**CT 07 A**  
Nero  
Black



**Tessuti certificati ECO-FRIENDLY.**  
Questa certificazione vi offre la garanzia che tutti i tessuti da noi utilizzati sono prodotti nel più totale rispetto delle normative vigenti, seguendo dei rigidi parametri eco-sostenibili e non nocivi per l'uomo e gli animali.

**ECO-FRIENDLY certified fabrics.**  
This certificate guarantee that all the fabrics we use are produced following all the lows concerning environmental protection and people's health.

NOBILBOND 799 CAT. B

NOBILBOND 799 CAT. B

100% PL  
Idrorepellente / Water Repellent



**205**  
Fumo  
Smoke



**01**  
Bianco  
White



**104**  
Crema  
Cream



**130**  
Cachi  
Khaki



**100**  
Tronco  
Trunk



**2100**  
Bistrot  
Bistrot



**13**  
Felce  
Fern



**105**  
Mandarino  
Tangerine



**07**  
Ruggine  
Rust



**09**  
Rosso  
Red



**90**  
Amaranto  
Reddish purple



**615**  
Salmone  
Salmon



**23**  
Rosa  
Pink



**19**  
Pervica  
Pervica



**15**  
Petrolio  
Petroleum



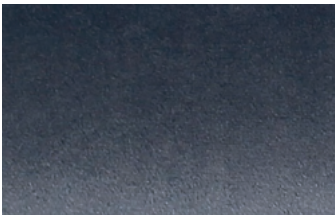
**26**  
Zafferano  
Saffron



**14**  
Acquamarina  
Aquamarine



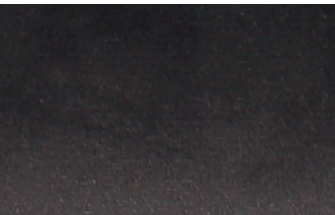
**16**  
Avio  
Avio



**617**  
Ardesia  
Slate



**27**  
Grigio  
Grey

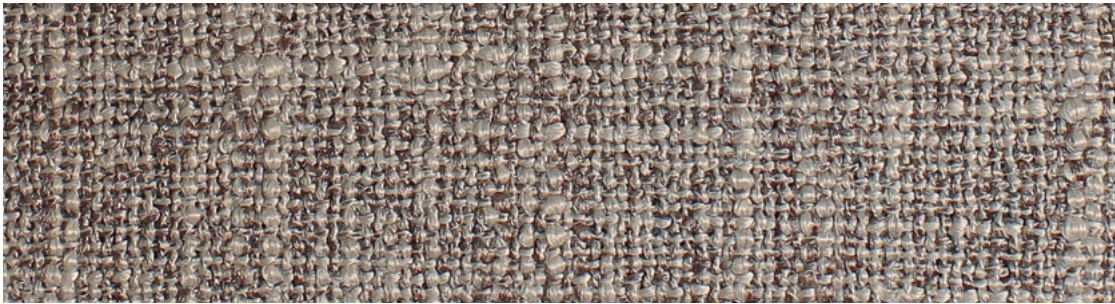


**18**  
Nero  
Black



GRUMELLO 457 CAT. B  
GRUMELLO 457 CAT. B

100% PL  
Idrorepellente / Water Repellent



130  
Biscotto  
Biscuit



01  
Natur  
Natur



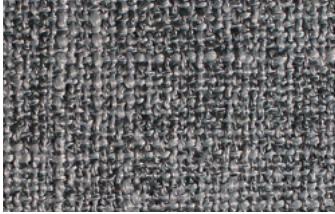
19  
Sabbia  
Sand



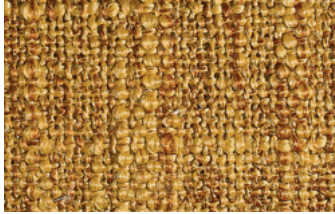
27  
Tortora  
Turtledove



616  
Perla  
Pearl



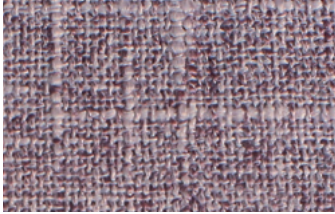
205  
Cenere  
Ash grey



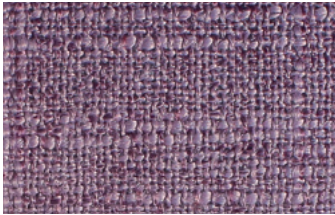
26  
Zafferano  
Saffron



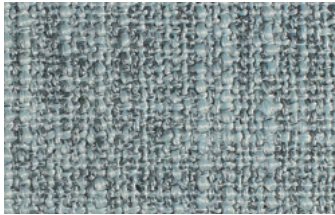
617  
Fumo  
Smoke



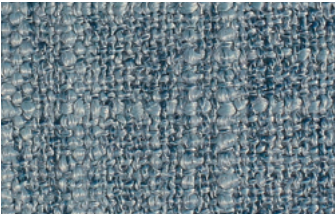
23  
Rosa  
Pink



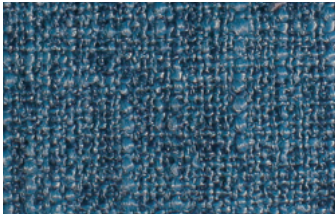
80  
Lavanda  
Lavender



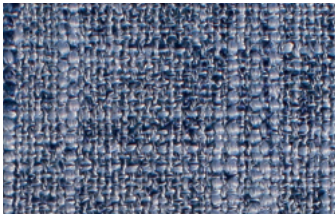
21  
Polvere  
Dust



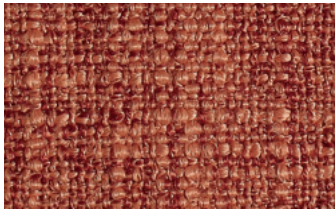
17  
Palude  
Swamp



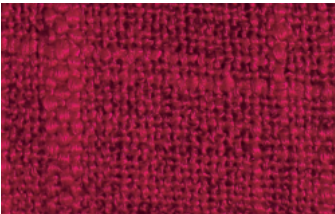
16  
Denim  
Denim



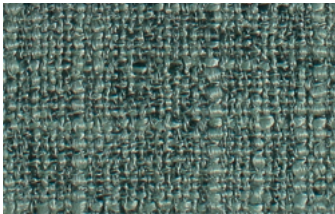
15  
Avio  
Avio



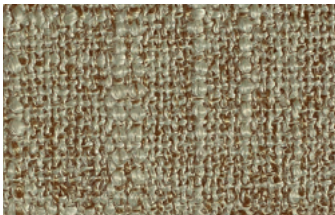
07  
Carota  
Carrot



10  
Rosso  
Red



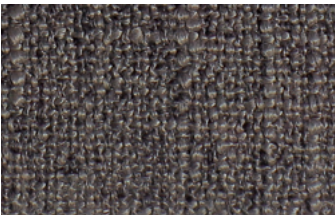
56  
Felce  
Fern



12  
Pisello  
Peal



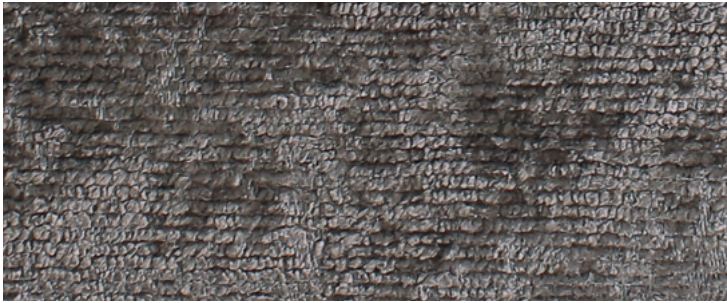
20  
Beige  
Beige



18  
Fango  
Mud

GRANADA 458 CAT. B  
GRANADA 458 CAT. B

100% PL  
Idrorepellente / Water Repellent



205  
Famgo  
Mud



20  
Sabbia  
Sand



01  
Natur  
Natur



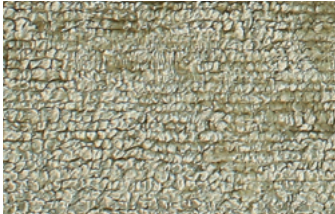
19  
Ghiaccio  
Ice



104  
Beige  
Beige



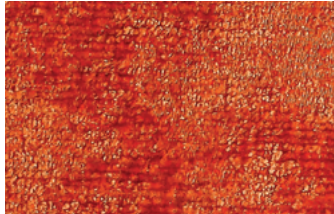
130  
Corda  
Rope



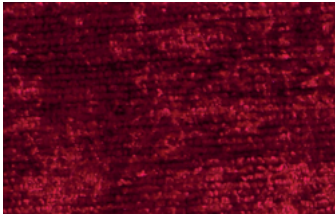
12  
Pisello  
Pea



100  
Camoscio  
Chamois



07  
Arancio  
Orange



10  
Rosso  
Red



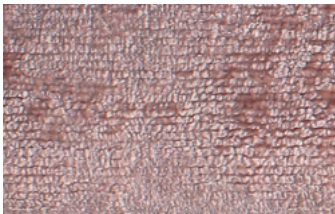
90  
Prugna  
Plum



23  
Viola  
Violet



14  
Blu  
Blue



615  
Rosa  
Pink



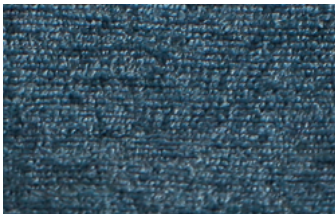
56  
Palude  
Swamp



15  
Ottanio  
Teal



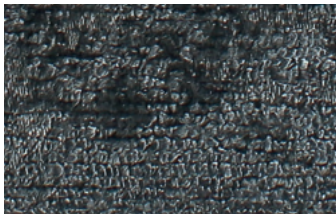
17  
Avio  
Avio



16  
Notte  
Night



616  
Tortora  
Turtledove



180  
Antracite  
Anthracite



26  
Giallo  
Yellow



**Tessuti certificati ECO-FRIENDLY.**  
Questa certificazione vi offre la garanzia che tutti i tessuti da noi utilizzati sono prodotti nel più totale rispetto delle normative vigenti, seguendo dei rigidi parametri eco-sostenibili e non nocivi per l'uomo e gli animali.

**ECO-FRIENDLY certified fabrics.**  
This certificate guarantee that all the fabrics we use are produced following all the lows concerning environmental protection and people's health.



REM CAT. B  
REM CAT.B

11% CO 24% PES 65% PU



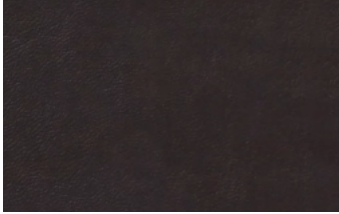
RE 13 B

Avorio  
Ivory



RE 195 B

Sabbia  
Sandy



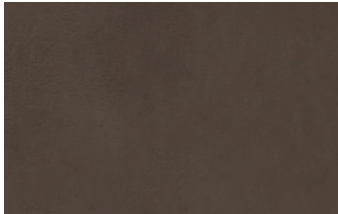
RE 888 B

Testa di Moro  
Dark Brown



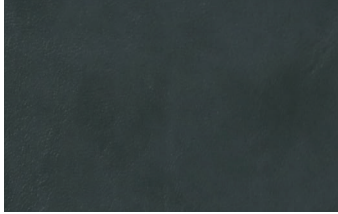
RE 792 B

Grigio Scuro  
Dark Grey



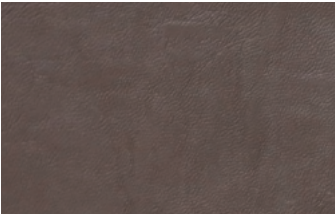
RE 975 B

Tortora  
Dove Grey



RE 290 B

Bosco  
Forrest Green



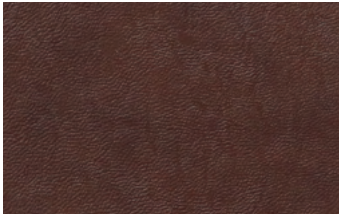
RE 954 B

Oliva  
Olive



RE 112 B

Avio  
Avio



RE 100 B

Tabacco  
Tobacco



RE 970 B

Grigio Chiaro  
Light Grey

Tessuti idrorepellenti e antimacchia

Le moderne tecniche costruttive ci permettono di avere tessuti formati da filati con fibre finissime (dette microfibre) che intrecciate tra loro conferiscono una eccezionale robustezza. La caratteristica di Antimacchia ne deriva dal fatto che lo sporco non attecchisce al filato e può essere rimosso con la semplice smacchiatura. Il trattamento Idrorepellente non permette ai liquidi e macchie di penetrare nelle fibre mantenendo la caratteristica traspirante del tessuto e aumentandone la facilità di eliminare le macchie. Tutto ciò si traduce in massima praticità, confort e durata.

Simboli di lavaggio	
Lavaggio a macchina alla temperatura indicata	Non candeggiare
Stirare a bassa temperatura (max 110°)	Stirare a media temperatura (max 150°)
Il prodotto tessile non sopporta l'asciugatura in tamburo	Lavaggio a secco con tutti i solventi escluso la trielina
Asciugatura in posizione verticale (appeso) del prodotto tessile intriso d'acqua, cioè senza spremitura e/o centrifuga	Il prodotto tessile sopporta l'asciugatura in tamburo a temperatura ridotta

Norme di smacchiatura per tessuti idrorepellenti

Caffè, Latte, The: tamponare con carta assorbente. Quindi eliminare la macchia con panno imbevuto con acqua e sapone neutro. Se la macchia persiste strofinare con tampone imbevuto con alcool denaturato.

Inchiostro, Biro: assorbire con carta assorbente e poi trattare con panno imbevuto con trielina o alcol denaturato.

Olio e Grasso: tamponare con carta assorbente. Eliminare la macchia con tampone imbevuto con trielina o percloroetilene.

Vino e Liquore: assorbire prima con carta assorbente. Eliminare la macchia con tampone imbevuto con alcol denaturato.

Erba e Marmellata: Tamponare con acqua. Per eliminare eventuali aloni strofinare con carta assorbente e ripetere il trattamento con panno imbevuto con alcol denaturato.

Fabrics water-repellent and stain-resistant

The modern construction techniques allow us to get fabrics composed by yarns with very thin fibres (called microfibrés) giving an exceptional strength when interwoven among them. Thanks to their characteristic of stain-resistant, the dirty doesn't penetrate into the yarn and can be removed with a simple stain removing. The water-repellent treatment doesn't allow the liquids and stains to penetrate in the fibres, maintaining anyway the transpiring characteristic of the fabric and increasing the facility to remove the stains. All this means maximum practicality, comfort and duration.

Washing symbols	
Machine washing at the indicated temperature	Do not bleach
Ironing at low temperature (max 110°)	Ironing at medium temperature (max 150°)
Do not dry by means of tumble dryer	Dry cleaning with all solvents except for trichloroethylene
Drying in vertical position (hanging) soaked in water, it means without squeezing and/or spin-drying	Drying by tumble dryer at reduced temperature allowed

Rules of stain removing for water-repellent fabrics

Coffee, Milk, Tea: tampon with blotting paper. Then remove the stain using a cloth soaked in water and neutral soap. If the stain persists, scrub using a pad soaked in denatured alcohol.

Ink, Ballpoint: absorb using blotting paper and then treat using a cloth soaked in trichloroethylene or denatured alcohol.

Oil and Greasy: tampon with blotting paper. Remove the stain with a pad soaked in trichloroethylene or perchloroethylene.

Wine and Liqueur: absorb using a blotting paper. Remove the stain using a blotting pad soaked in denatured alcohol.

Grass and Jam: tampon with water. Scrub using blotting paper for removing possible halos and repeat the treatment using a cloth soaked in denatured alcohol.



Nessuna parte di questo catalogo, testo o fotografia può essere riprodotta o trasmessa in qualsiasi forma o tramite mezzo elettronico o meccanico, comprese le fotocopie, senza previo permesso scritto da parte della società Ivano**Antonello**Italia®.

No part of this catalogue, text or photograph may be reproduced or transmitted in any shape or form, through electronic or paper-based communication, including photocopies, without the prior express written consent of Ivano**Antonello**Italia®.

Essendo un vetro cotto forgiato un materiale naturale, potrebbe presentare caratteristiche estetiche e lievi differenze di colore.

Being a forged annealed glass a natural material, it may have aesthetic characteristics and slight differences in color.

Concept		Ivano <b>Antonello</b> Italia®
Photos		Master Fotografie
		Andrea Pitari
		Studio Campesato
		Walter Gumiero
Graphics		Galvani & Tremolada
Styling		Sara Sarli
		Stefania Rusalem

**IvanoAntonelloItalia®**  
Via Nazionale, 24/D  
37047 San Bonifacio  
Verona - Italy

**Tel** +39 045 7611400  
**Site** [www.ivanoantonelloitalia.it](http://www.ivanoantonelloitalia.it)  
**Mail** [info@ivanoantonelloitalia.it](mailto:info@ivanoantonelloitalia.it)

I prodotti  
Ivano**Antonello**Italia®  
sono garantiti  
100% Made in Italy.

Ivano**Antonello**Italia®  
products are  
100% Made in Italy  
guaranteed.