

TESSUTI . FABRICS CAT. A



MOON LIGHT 104 CANAPA



MOON LIGHT 10 PORTOFINO



MOON LIGHT 14 AVIO



MOON LIGHT 20 TORTORA



MOON LIGHT 04 CAMMELLO



MOON LIGHT 03 DUNE



MOON LIGHT 11 VISONE



MOON LIGHT 100 CIOCCOLATO



MOON LIGHT 18 NERO



MIAMI 1 SABBIA



MIAMI 2 CANAPA



MIAMI 622 TORTORA

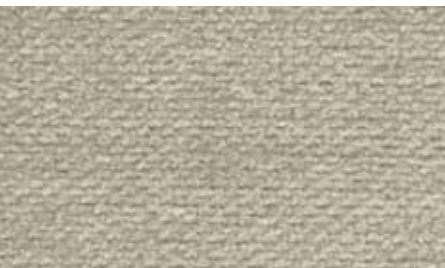


MIAMI 205 NAMIBIA

TESSUTI . FABRICS CAT. B



HAVANA 1 BEIGE



HAVANA 12 TORTORA



HAVANA 622 CRETA



HAVANA 2 FANGO



HAVANA 10 ROSSO



HAVANA 17 AVIO



HAVANA 205 ANTRACITE



OLIVER 23 SABBIA

TESSUTI . FABRICS CAT. B



OLIVER 05 CASTAGNA



OLIVER 2012 MARMOTTA



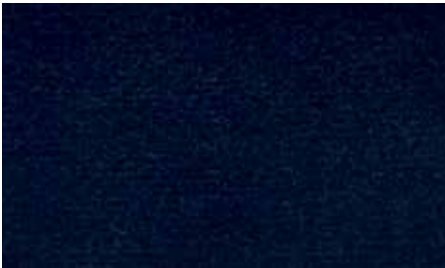
OLIVER 2002 MOKA



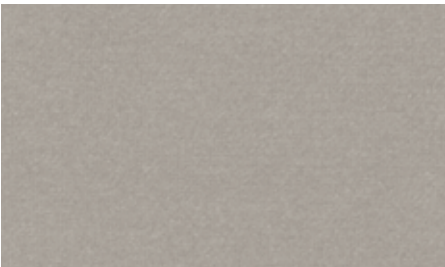
OLIVER 14 ZUCCA



OLIVER 1402 MUSCHIO



OLIVER 54 COBALTO



OLIVER 29 GHIACCIO



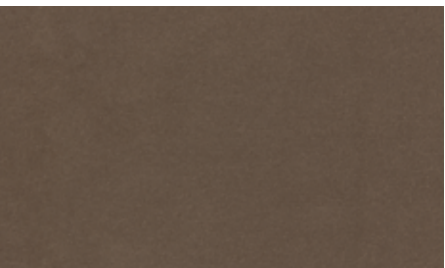
OLIVER 1404 GHISA



VELVET 02 PANNA



VELVET 1720 BEIGE



VELVET 1709 MILITARE



VELVET 1715 CAMMELLO



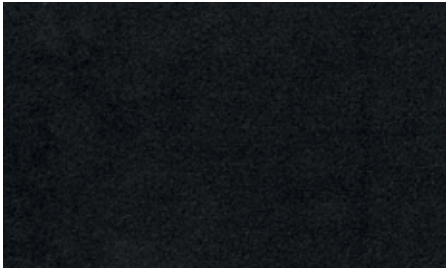
VELVET 09 MELANZANA



VELVET 04 CRETA



VELVET 08 CIOCCOLATO



VELVET 12 PRUSSIA



VELVET 11 GRIGIO



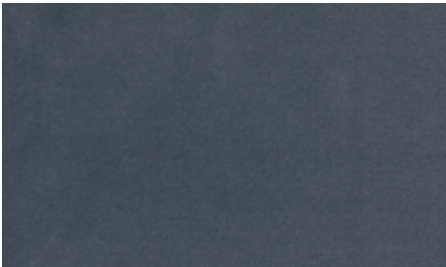
VELVET 1708 TERRA



VELVET 28 MATTONE



VELVET 35 CIPRIA



VELVET 111 CARTA DA ZUCCHERO



VELVET 1004 SENAPE



VELVET 19 CROMO



PELLI . LEATHERS CAT. A



CLAYTON 1660 GRIGIO



CLAYTON 1639 LUMIERE



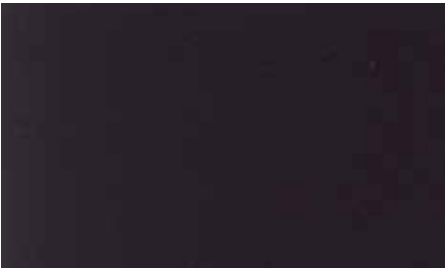
CLAYTON 1627 TORTORA



CLAYTON 1101 NERO



CLAYTON 1108 CHIANTI



CLAYTON 1147 DARK



CLAYTON 1179 GESSO



CLAYTON 1216 FANGO



CLAYTON 1226 BEIGE

PELLI . LEATHERS CAT. B



CAMOSCIO 8 FANGO



CAMOSCIO 16 PORTOFINO



CAMOSCIO 21 NAMIBIA



CAMOSCIO 23 DUNE



CAMOSCIO 26 GRIGIO



CAMOSCIO 31 PERLA



CAMOSCIO 27 TORTORA



CAMOSCIO 32 CORDA



CAMOSCIO 34 MOKA

NABUK



NABUK 2117 FERRO



NABUK 2116 TABACCO



NABUK 2115 TORTORA



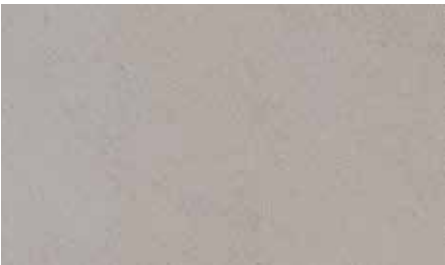
NABUK 2114 CIOCCOLATO



NABUK 2100 GESSO



NABUK 2101 SABBIA



NABUK 2118 CANAPA



NABUK 10 ROSA ANTICO



NABUK 18 BLU



NABUK 21 ROSSO



NABUK 22 OCRA



NABUK 24 MUSCHIO

ESEMPI DI STAMPA RIPRODUCIBILI SU TUTTO IL CAMPIONARIO  
PELLE, NABUK, CAMOSCIO

EXAMPLES OF PRINTS REPRODUCIBLE ON ALL FABRICS  
LEATHER, NUBUCK, SUEDE.



F/11 STAMPA JUBILEÉ



F/10 STAMPA KORDA



STAMPA KUBA

DAYTONA è un marchio registrato da SIGNORINI&COCO.  
É vietato l'utilizzo improprio del marchio e di tutti i suoi componenti. Tutte le dimensioni riportate nella sezione tecnica sono in cm, approssimative e con possibilità di variazioni (tolleranza del +/-2%). L'azienda si riserva il diritto di effettuare modifiche e aggiornamenti tecnico-produttivi al presente catalogo senza preavviso.  
Le immagini e i colori dei prodotti stampati nel catalogo sono puramente indicativi.

DAYTONA is a SIGNORINI&COCO registered trademark. Improper use of the trademark and all its parts is forbidden.  
All the dimension included in the technical description are in cm, approximate and subject to change (with a tolerance of +/-2%). The company preserves the right to change the techical features of the products shown in this catalogue without notice as a result of technical updates. The images and the colours of the products printed in this catalogue are purely for information.

ESSENZE . WOODS FINISHES



NOCE DARK GLOSSY



NOCE DARK MATT



MIRTO GLOSSY



MIRTO MATT

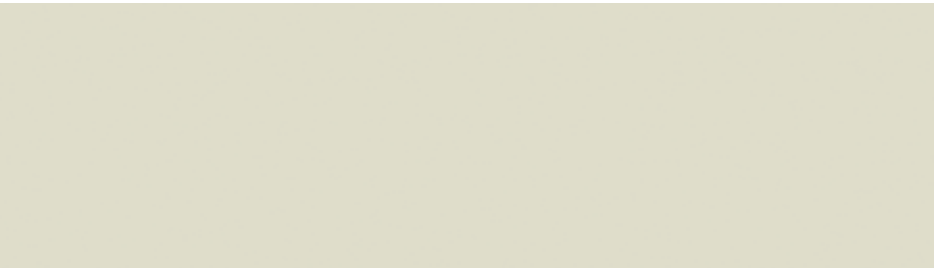


MIRTO GRAY



EBONY

LACCATI . LACQUER FINISHES



AVORIO



FUMO



CANAPA



VISIONE



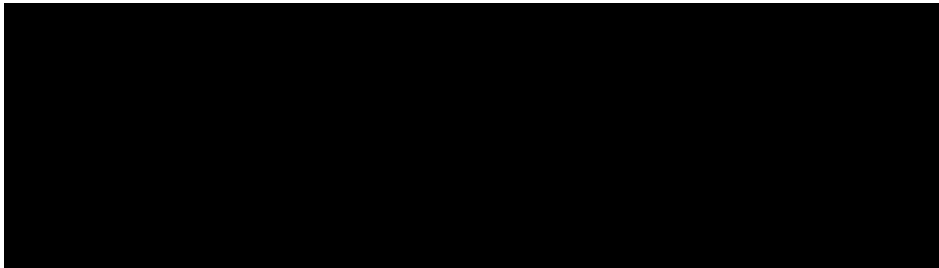
SIENNA



POSITANO



LACCATI . LACQUER FINISHES



NERO



CHIANTI

VETRI, SPECCHI E METALLI . GLASSES, MIRRORS AND METALS



VETRO BRONZO | BRONZE GLASS



SPECCHIO BRONZO | BRONZE MIRROR

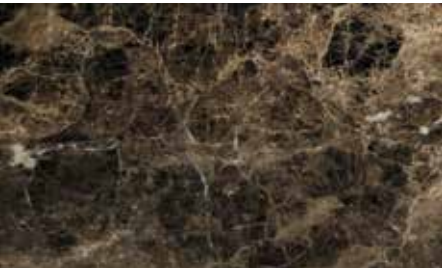


OTTONE | BRONZED



FOGLIA ORO PATINATA LUCIDA SPAZZOLATA |  
BRUSHED GLOSS FINISH WITH GOLD LEAF GLAZE

MARMI . MARBLE



EMPERADOR



CALACATTA GOLD



RAIN FOREST GREEN



RAIN FOREST BROWN



VETRO FUMÈ | SMOKED GLASS



SPECCHIO FUMÈ | SMOKED MIRROR



TITANIO | TITANIUM



TITANIO LUCIDO SPAZZOLATO | BRUSHED GLOSS FINISH WITH TITANIUM

## MATERIALS

The DAYTONA collection is constructed using blockboard, hollow-core wood and plywood.

The solid maple wood used is selected at source, according to its fibre, specific weight and the chemical composition of the particular type of wood. Our furniture is made mostly with maple wood.

## EXTERNAL PARTS

All the visible external parts of our furniture, such as fronts, external side panels or tops are in plywood veneered with a layer of high quality ash or 10/10 canaletto walnut. These materials are embellished with elegant inserts in real leather with cannetté working, to bring out the exquisite beauty of each single piece.

## INTERIORS, BACKS, DRAWERS, SHELVES

They are made of resistant hardwoods that are easy to work with. This wood, including ash, maple and beech, also comes from the Mediterranean area. Whether one of these materials is used rather than another depends on technical and construction factors assessed by our technicians based on their vast experience in the trade, with the ultimate aim of guaranteeing a long-lasting and attractive piece of furniture. The drawers are fully lined.

---

## METAL

All metal parts are made in pure brass welded to silver and burnished by our expert craftsmen, to give a touch of elegance and class.

## MARBLE

Two particularly precious types of marble are used in the collection: dark Emperador and Calacatta Gold, which are also very suited to the styles of our furniture.

## UPHOLSTERED FURNITURE

The structures are in plywood and upholstered with rubber in various densities and a top layer in air soft, all covered with a final, soft layer of goose down. The bases are in solid maple or burnished brass. The goose down cushions are perforated at the back for maximum comfort.

## TECHNICAL CONSTRUCTION DETAILS

All our furniture is built and assembled using old cabinet making techniques. With the aid of cutting-edge technology, we adapt these to meet the specific characteristics of the different types of furniture to ensure problems do not occur over time. However, in this connection, we recommend that you do not expose the furniture to direct sources of heat.

---

## COATINGS, FINISHES AND LACQUERING

The colour shades of the furniture are chosen carefully and selected by combining the designers' tastes with the period and style of the furniture. Our technicians and workers' knowledge of painting, mixed with these invaluable considerations, help to bring out the best in our furniture. The furniture is coloured using water-based paint, followed by glossy polyester paints. The final polishing stage involves a full gloss finish, and are then polished by hand to give each piece an exclusively elegant finish.

## ILLUMINATION

All lighting fixtures are compliant with the relevant EEC directives.

## HANDLES, KEYS, LOCKS AND SUNDRY ACCESSORIES

All furniture accessories are in pure brass, forged following the oldest techniques for working with noble metals.

---

## CARE AND MAINTENANCE ADVICE

To best preserve your new item of furniture, we recommend following the advice below:

- clean the surfaces occasionally, dusting with a soft cloth to renew their shine
- do not use spray products
- avoid positioning the furniture in damp places or near to heat sources.

To clean leather or suede, use the special kit provided and follow the instructions given.

When the furniture is no longer needed, dispose of the item correctly. Call the local solid waste disposal company and arrange for its transportation to the landfill or recycling centre.

---