

# CAMPIONARIO

Antonelloitalia si riserva di apportare, senza preavviso, modifiche nei materiali, nelle finiture e nei disegni dei prodotti presentati in questo catalogo. Le texture ed i colori dei materiali e delle finiture hanno valore indicativo in quanto soggetti alle tolleranze dei processi di stampa.

Antonelloitalia reserves the right to change, without previous notice, materials, finishes and product designs presented in this catalogue. The textures and the colours of materials and finishes are indicative as they are depending on the tolerances of the printing process.



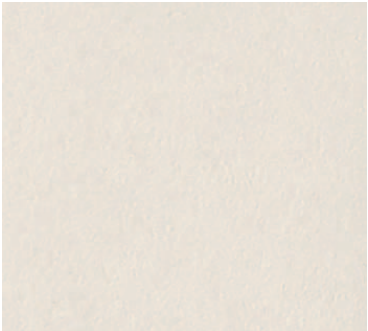
Wengè\_Wengè



Noce Canaletto\_Canaletto Walnut



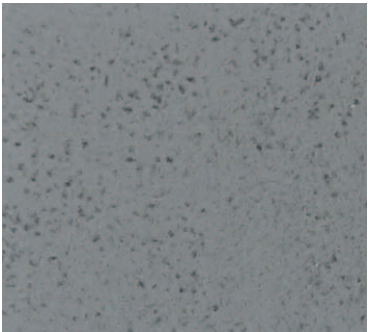
Rovere Grigio\_Grey Oak



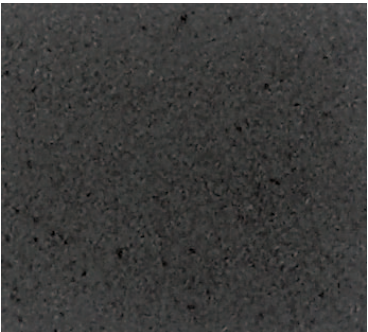
Collection Bianco **7072**  
White Collection 7072



Oxide Bronzo **7074**  
Bronze Oxide 7074



Blend Grigio **7075**  
Grey Blend 7075



Blend Nero **7076**  
Black Blend 7076



Rovere Affumicato\_Smoked Oak



Ossidiana **7077**  
Ossidiana 7077



Collection Nero **7078**  
Black Collection 7078



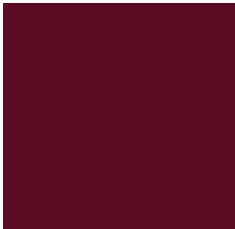
LACCATI LUCIDI  
SHINING LACQUERED WOOD



Grigio Scuro **1022**  
Dark Grey



Nero **1073**  
Black



Rosso **1089**  
Red



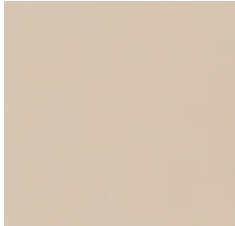
Verde **1063**  
Green

Bianco\_White 1071  
Crema\_Cream 1092  
Tortora\_Dove Grey 1079  
Fango\_Mud 1006  
Moka\_Dark Brown 1091  
Grigio Chiaro\_Light Grey 1030  
Cenere\_Ash Grey 1033

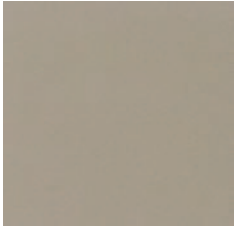
LACCATI OPACHI  
MATT LACQUERED WOOD



Bianco **4071**  
White



Crema **4092**  
Cream

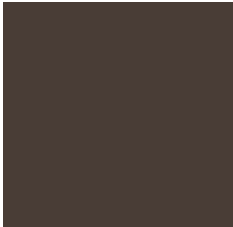


Tortora **4079**  
Dove Grey



Fango **4006**  
Mud

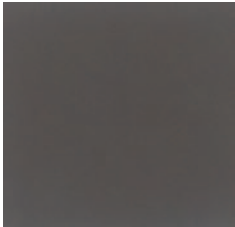
Grigio Scuro\_Dark Grey 4022  
Nero\_Black 4073  
Rosso\_Red 4089  
Verde\_Green 4063



Moka **4091**  
Dark Brown



Grigio Chiaro **4030**  
Light Grey



Cenere **4033**  
Ash Grey

CRISTALLI VERNICIATI LUCIDI  
SHINING PAINTED GLASS



Grigio Scuro **3022**  
Dark Grey



Nero **3073**  
Black



Rosso **3089**  
Red



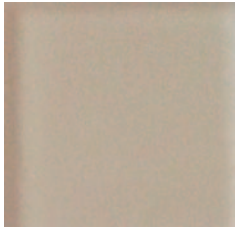
Verde **3063**  
Green

Bianco\_White 3071  
Crema\_Cream 3092  
Tortora\_Dove Grey 3079  
Fango\_Mud 3006  
Moka\_Dark Brown 3091  
Grigio Chiaro\_Light Grey 3030  
Cenere\_Ash Grey 3033

CRISTALLI ACIDATI VERNICIATI OPACHI  
MATT PAINTED SATINED GLASS



Bianco **5071**  
White



Crema **5092**  
Cream

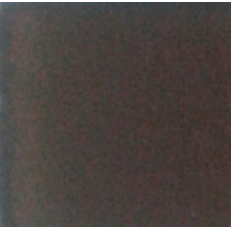


Tortora **5079**  
Dove Grey



Fango **5006**  
Mud

Grigio Scuro\_Dark Grey 5022  
Nero\_Black 5073  
Rosso\_Red 5089  
Verde\_Green 5063



Moka **5091**  
Dark Brown



Grigio Chiaro **5030**  
Light Grey

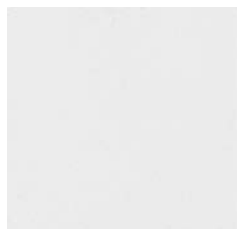


Cenere **5033**  
Ash Grey

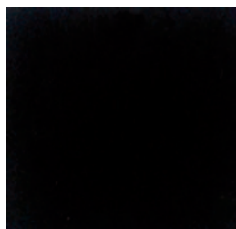


Fumé  
Fumé

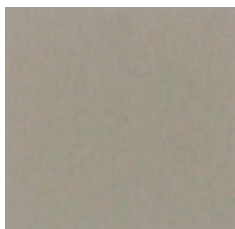
METALLI  
METAL



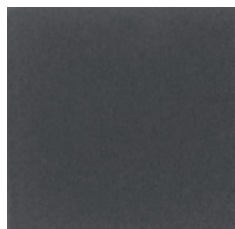
Bianco Opaco **M10**  
Matt White



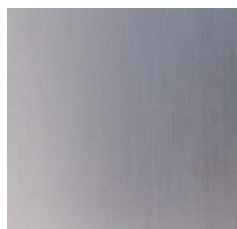
Nero Opaco **M5**  
Matt Black



Tortora Opaco **M7**  
Matt Dove Grey



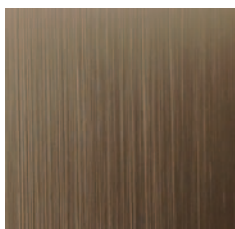
Cenere Opaco **M24**  
Matt Ash Grey



Alluminio Anodizzato **M12**  
Anodized Aluminium

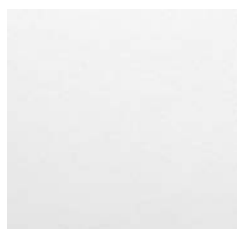


Alluminio Lucido **M14**  
Shining Aluminium

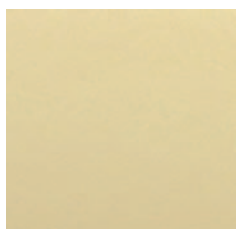


Alluminio Bronzo **M20**  
Bronze Aluminium

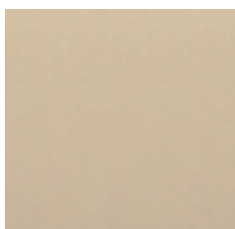
CUOIO  
HIDE LEATHER



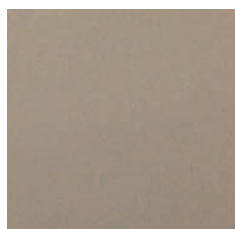
Bianco **71**  
White



Crema **68**  
Cream



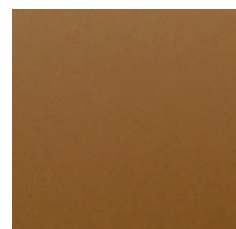
Avoorio **12**  
Ivory



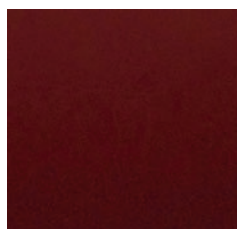
Tortora **79**  
Dove Grey



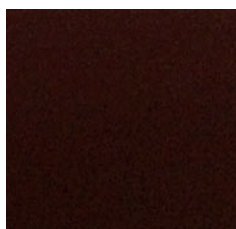
Giallo **95**  
Yellow



Naturale **32**  
Natural



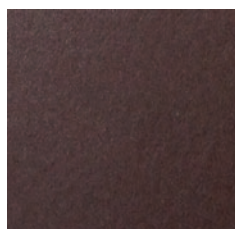
Mattone **16**  
Brick Red



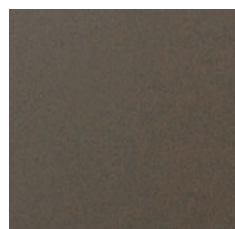
Marrone **20**  
Brown



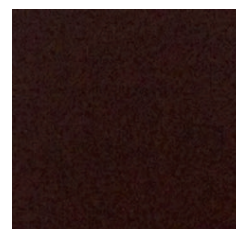
Argento **96**  
Silver



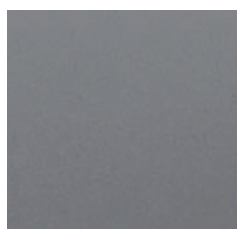
Bronzo **31**  
Bronze



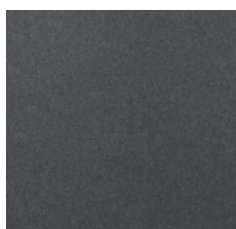
Ocra Bruno **38**  
Brown Ochre



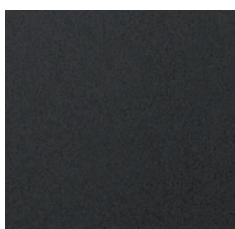
T. di Moro **91**  
Dark Brown



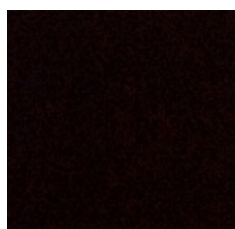
Grigio Chiaro **30**  
Light Grey



Grigio Piombo **37**  
Lead Grey



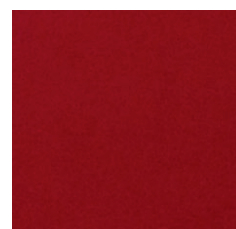
Ardesia **26**  
Slate



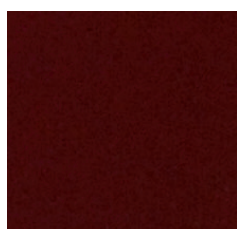
Nero **73**  
Black



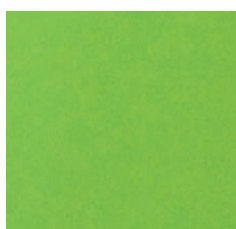
Arancione **64**  
Orange



Rosso **89**  
Red



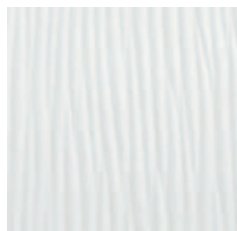
Bordeaux **70**  
Bordeaux



Verde **63**  
Green



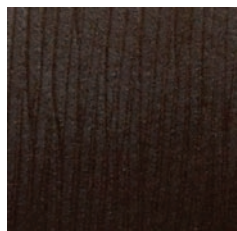
CUOIO STAMPATO  
STAMPED HIDE LEATHER



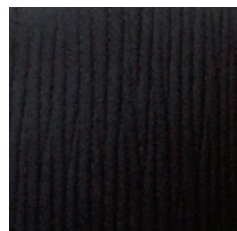
Bianco **PA01**  
White



Avorio **PA02**  
Ivory



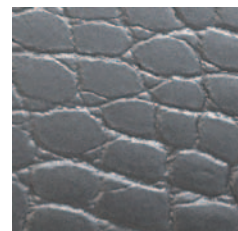
T. di Moro **PA03**  
Dark Brown



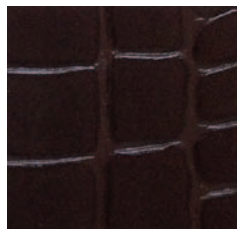
Nero **PA04**  
Black



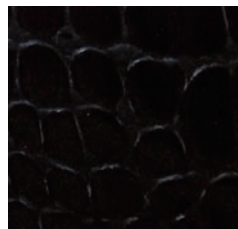
Bianco **42**  
White



Argento **44**  
Silver



T. di Moro **45**  
Dark Brown



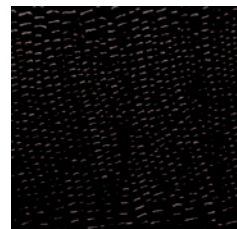
Nero **47**  
Black



Bianco **SE01**  
White

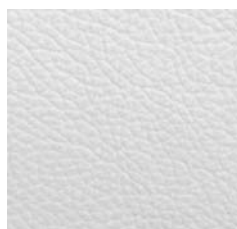


Grigio **SE04**  
Grey

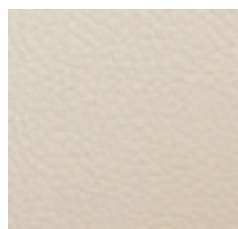


Nero **SE03**  
Black

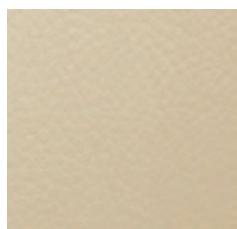
PELLE  
SOFT LEATHER



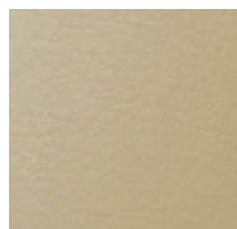
Bianco **A000**  
White



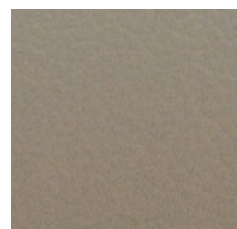
Bianco Panna **A130**  
Creamy White



Crema **A028**  
Cream



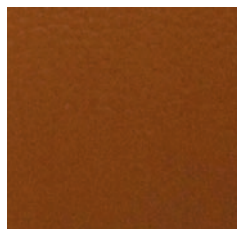
Avorio **A250**  
Ivory



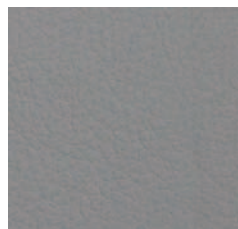
Tortora **A264**  
Dove Grey



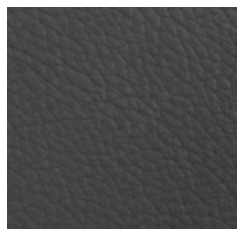
Giallo **A260**  
Yellow



Naturale **A060**  
Natural



Grigio Chiaro **A290**  
Light Grey



Ardesia **A275**  
Slate



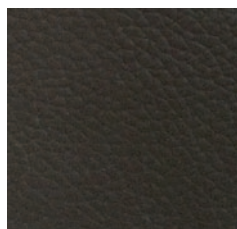
Bronzo **A380**  
Bronze



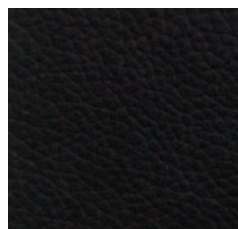
Ocra Bruno **A325**  
Brown Ochre



Marrone **A340**  
Brown



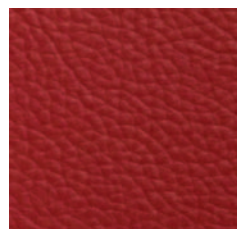
T. di Moro **A330**  
Dark Brown



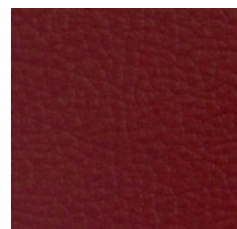
Nero **A150**  
Black



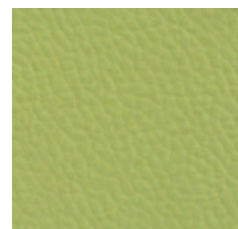
Arancione **A230**  
Orange



Rosso **A090**  
Red

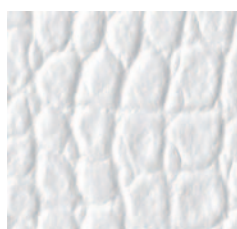


Bordeaux **A200**  
Bordeaux



Verde **A220**  
Green

PELLE STAMPATA  
STAMPED LEATHER



Bianco **PC000**  
White



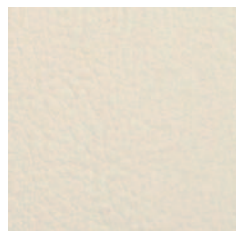
T. di Moro **PC330**  
Dark Brown



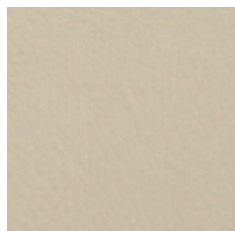
Nero **PC150**  
Black



Bianco **SI 01**  
White



Crema **SI 02**  
Cream



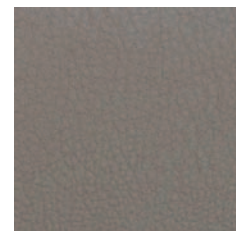
Avorio **SI 04**  
Ivory



Giallo **SI 11**  
Yellow



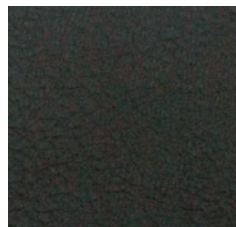
Tortora **SI 05**  
Dove Grey



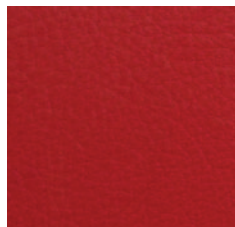
Fango **SI 26**  
Mud



Marrone **SI 07**  
Brown



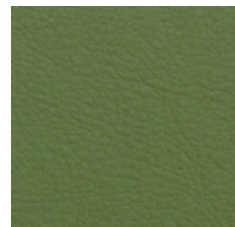
T. di Moro **SI 08**  
Dark Brown



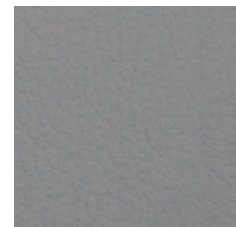
Rosso **SI 13**  
Red



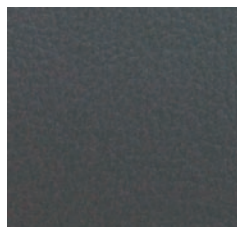
Verde **SI 17**  
Green



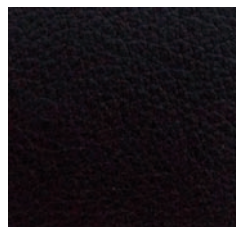
Verde Oliva **SI 18**  
Olive Green



Grigio Chiaro **SI 36**  
Light Grey



Grigio **SI 23**  
Grey



Nero **SI 24**  
Black

**Cuoio, Pelle e Ecopelle \_ Hide leather, Soft leather and Synthetic leather \_ Cuir, Cuir mince et Synthétique \_ Cuero, Piel y Sintética \_ Leder, Weichleder und Synthetisches Weichleder**

**IT - PULIZIA E MANUTENZIONE**

Per la normale pulizia utilizzare solamente un panno morbido e asciutto. Eventuali macchie si possono eliminare agendo con un panno umido e utilizzando prodotti neutri. Non usare solventi (es. alcool). Solo per macchie più resistenti utilizzare prodotti specifici per la pelle facendo inizialmente una prova in una zona non visibile per verificarne l'efficacia.

Attenzione: i colori dei campionari sono indicativi e si possono riscontrare lievi tolleranze tra i campioni ed i prodotti finiti.

**EN - CLEANING AND MAINTENANCE**

Dust with a soft and dry cloth for the normal clearing. Any stains can be removed with a wet cloth and using delicate products. Do not use solvents (i.e. alcohol). Only for more resistant stains use specific products for the soft leather making an initially test on a not visible area to verify its effectiveness.

Warning: since the samples colors are indicative, you can find light tolerances between samples and final products.

**FR - NETTOYAGE ET ENTRETIEN DU CUIR**

Pour un nettoyage normal, n'utiliser qu'un chiffon doux et sec. Les éventuelles taches peuvent s'enlever à l'aide d'un tissu humide et en utilisant des produits neutres. Ne pas utiliser de solvants (par exemple alcool). Pour les taches les plus résistantes, utiliser des produits spécifiques pour le cuir en ayant auparavant fait un test sur une zone non apparente pour en vérifier l'efficacité.

Attention: les couleurs des échantillonnages ne sont qu'indicatives et des légères différences peuvent apparaître entre les échantillons et les produits finis.

**ES - LIMPIEZA Y MANTENIMIENTO**

Para su limpieza, utilizar un paño de algodón seco. Para otras manchas, utilizar un paño mojado y productos neutros. Nunca utilizar disolventes (por ejemplo el alcohol). Solo para manchas mas difíciles emplear productos específicos para la piel haciendo una prueba inicial sobre una zona no visible para verificar la eficacia.

Atencion: los colores del muestrario son indicativos y pueden tener muy ligeras variaciones entre la muestra y el producto finido.

**DE - LEDERPFLEGE**

Benutzen ein weichen und trockenen Tuch für die normale Reinigung. Stärke Flecke müssen mit einem Neutralprodukt behandelt und mit einem sauberen Tuch nachgerieben. Benutzen Sie kein Lösungsmittel (z.B. Alkohol). Nur für mehr widerstandsfähige Flecke gebrauchen spezifische Produkte für das weiche Leder, das zuerst Test auf nicht sichtbares Gebiet macht, um sein Wirksamkeit nachzuprüfen.

Achtung: Die Musterfarben sind ungefähr und es können leichte Toleranzen zwischen Musterfarben und den fertigen Waren auftreten.

**Ecopelle \_ Synthetic leather \_ Cuir mince synthétique \_ Piel Sintética \_ Synthetisches Weichleder**

**IT** - L'ecopelle è un prodotto Made in Italy e ha superato le sottoelencate prove per la resistenza alla fiamma secondo gli standard europei.

EN 1021-2/93-BS 5852-1/79-BS 5852/90 Sezione 4-crib5  
UNI 9175/87 E 9175 FA-1/94 CLASSE 1.IM

**EN** - The synthetic leather is a Made in Italy product and it passed the here below tests concerning the fire resistance according to the European standards.

EN 1021-2/93-BS 5852-1/79-BS 5852/90 Section 4-crib5  
UNI 9175/87 E 9175 FA-1/94 CLASS 1.IM

**FR** - Le cuir mince synthétique est un produit Made in Italy et a passé les tests de résistance au feu selon les normes européennes (ci-dessous indiqués).

EN 1021-2/93-BS 5852-1/79-BS 5852/90 Section 4-crib5  
UNI 9175/87 E 9175 FA-1/94 CLASSE 1.IM

**ES** - La piel sintética es un producto Made in Italy que ha superado las pruebas que se enumeran a continuación de resistencia a la llamas según las normas europeas.

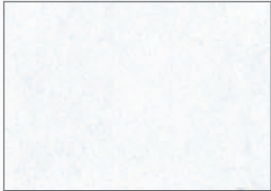
EN 1021-2/93-BS 5852-1/79-BS 5852/90 Sección 4-CRIB5  
UNI 9175/87 E 9175 FA-1/94 CLASE 1.IM

**DE** - Das synthetische Weichleder ist ein Produkt Made in Italy und hat die unten gennanten Prüfungen für Flammwidrigkeit nach europäischen Standards bestanden.

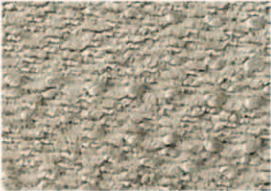
EN 1021-2/93-BS 5852-1/79-BS 5852/90 Abschnitt 4-CRIB5  
UNI 9175/87 E 9175 FA-1/94 CLASS 1.IM



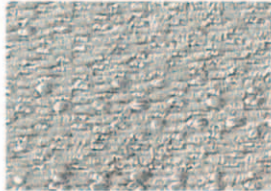




**B 420 T**  
100% PES



**A 505 T**  
76% VI 24% PES



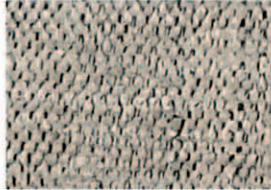
**A 601 T**  
76% VI 24% PES



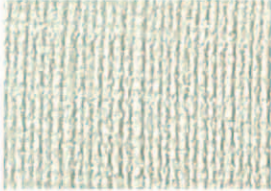
**A 401 T**  
100% PL  
idrorepellente / water repellent  
antimacchia / stain - resistant



**B 522 T**  
100% PES



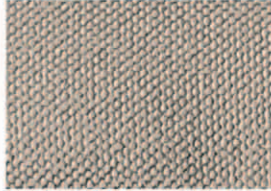
**A 602 T**  
42% PES 58% ACR



**A 402 T**  
100% PL  
idrorepellente / water repellent  
antimacchia / stain - resistant



**A 504 T**  
100% PL  
idrorepellente / water repellent  
antimacchia / stain - resistant



**A 603 T**  
100% PL  
idrorepellente / water repellent  
antimacchia / stain - resistant



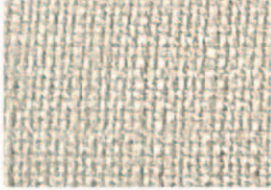
**B 421 T**  
65% COT 35% PL



**B 521 T**  
100% PES



**B 620 T**  
65% COT 35% PL



**A 403 T**  
100% PL  
idrorepellente / water repellent  
antimacchia / stain - resistant



**A 503 T**  
100% PL  
idrorepellente / water repellent  
antimacchia / stain - resistant



**A 604 T**  
100% PL  
idrorepellente / water repellent  
antimacchia / stain - resistant



**A 404 T**  
42% PES 58% ACR



**A 502 T**  
42% PES 58% ACR



**A 605 T**  
100% PL  
idrorepellente / water repellent  
antimacchia / stain - resistant



**B 422 T**  
65% COT 35% PL



**B 520 T**  
100% PES



**B 621 T**  
100% PES



**B 423 T**  
65% COT 35% PL



**A 501 T**  
76% VI 24% PES



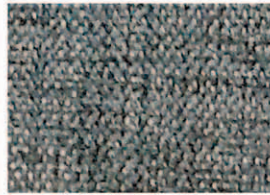
**A 606 T**  
76% VI 24% PES







42% PES 58% ACR



**A 801 T**

42% PES 58% ACR



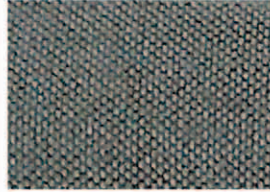
**B 920 T**

65% COT 35% PL



**A 702 T**

42% PES 58% ACR



**A 802 T**

100% PL  
idrorepellente / water repellent  
antimacchia / stain - resistant



**B 921 T**

100% PES



65% COT 35% PL



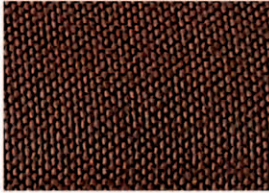
**A 803 T**

76% VI 24% PES



**A 901 T**

42% PES 58% ACR



**A 703 T**

100% PL  
idrorepellente / water repellent  
antimacchia / stain - resistant



**B 820 T**

65% COT 35% PL



**A 902 T**

100% PL  
idrorepellente / water repellent  
antimacchia / stain - resistant



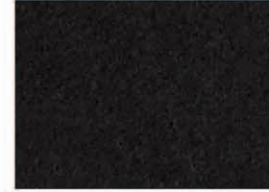
**A 704 T**

76% VI 24% PES



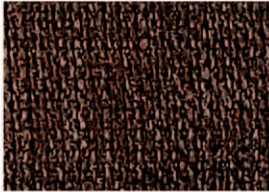
**A 804 T**

42% PES 58% ACR



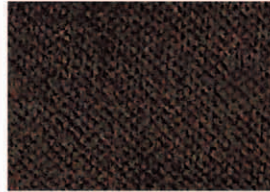
**B 922 T**

100% PES



**A 705 T**

100% PL  
idrorepellente / water repellent  
antimacchia / stain - resistant



**A 805 T**

100% PL  
idrorepellente / water repellent  
antimacchia / stain - resistant



**A 903 T**

100% PL  
idrorepellente / water repellent  
antimacchia / stain - resistant



**B 721 T**

65% COT 35% PL  
idrorepellente / water repellent  
antimacchia / stain - resistant



**A 806 T**

100% PL  
idrorepellente / water repellent  
antimacchia / stain - resistant



**A 904 T**

100% PL  
idrorepellente / water repellent  
antimacchia / stain - resistant



**A 706 T**

76% VI 24% PES



**B 821 T**

100% PES



**A 905 T**









76% VI 24% PES





Tessuti idrorepellenti e antimacchia

Le moderne tecniche costruttive ci permettono di avere tessuti formati da filati con fibre finissime (dette microfibre) che intrecciate tra loro conferiscono una eccezionale robustezza. La caratteristica di Antimacchia ne deriva dal fatto che lo sporco non attecchisce al filato e può essere rimosso con la semplice smacchiatura. Il trattamento Idrorepellente non permette ai liquidi e macchie di penetrare nelle fibre mantenendo la caratteristica traspirante del tessuto e aumentandone la facilità di eliminare le macchie. Tutto ciò si traduce in massima praticità, confort e durata.

Simboli di lavaggio	
 Lavaggio a macchina alla temperatura indicata	 Non candeggiare
 Stirare a bassa temperatura (max 110°)	 Stirare a media temperatura (max 150°)
 Il prodotto tessile non sopporta l'asciugatura in tamburo	 Lavaggio a secco con tutti i solventi escluso la trielina
 Asciugatura in posizione verticale (appeso) del prodotto tessile intriso d'acqua, cioè senza spremitura e/o centrifuga	 Il prodotto tessile sopporta l'asciugatura in tamburo a temperatura ridotta

Norme di smacchiatura per tessuti idrorepellenti

Caffè, Latte, The: tamponare con carta assorbente. Quindi eliminare la macchia con panno imbevuto con acqua e sapone neutro. Se la macchia persiste strofinare con tampone imbevuto con alcool denaturato.

Inchiostro, Biro: assorbire con carta assorbente e poi trattare con panno imbevuto con trielina o alcol denaturato.









Olio e Grasso: tamponare con carta assorbente. Eliminare la macchia con tampone imbevuto con trielina o percloroetilene.

Vino e Liquore: assorbire prima con carta assorbente. Eliminare la macchia con tampone imbevuto con alcol denaturato.

Erba e Marmellata: Tamponare con acqua. Per eliminare eventuali aloni strofinare con carta assorbente e ripetere il trattamento con panno imbevuto con alcol denaturato.

Fabrics water-repellent and stain-resistant

The modern construction techniques allow us to get fabrics composed by yarns with very thin fibres (called microfibrres) giving an exceptional strength when interwoven among them. Thanks to their characteristic of stain-resistant, the dirty doesn't penetrate into the yarn and can be removed with a simple stain removing. The water-repellent treatment doesn't allow the liquids and stains to penetrate in the fibres, maintaining anyway the transpiring characteristic of the fabric and increasing the facility to remove the stains. All this means maximum practicality, comfort and duration.

Washing symbols	
 Machine washing at the indicated temperature	 Do not bleach
 Ironing at low temperature (max 110°)	 Ironing at medium temperature (max 150°)
 Do not dry by means of tumble dryer	 Dry cleaning with all solvents except for trichloroethylene
 Drying in vertical position (hanging) soaked in water, it means without squeezing and/or spin-drying	 Drying by tumble dryer at reduced temperature allowed

Rules of stain removing for water-repellent fabrics

Coffee, Milk, Tea: tampon with blotting paper. Then remove the stain using a cloth soaked in water and neutral soap. If the stain persists, scrub using a pad soaked in denatured alcohol.

Ink, Ballpoint: absorb using blotting paper and then treat using a cloth soaked in trichloroethylene or denatured alcohol.

Oil and Greasy: tampon with blotting paper. Remove the stain with a pad soaked in trichloroethylene or perchloroethylene.

Wine and Liqueur: absorb using a blotting paper. Remove the stain using a blotting pad soaked in denatured alcohol.

Grass and Jam: tampon with water. Scrub using blotting paper for removing possible halos and repeat the treatment using a cloth soaked in denatured alcohol.

AntonelloItalia

Via Fossa Bassa, 34  
37047 San Bonifacio  
Verona - Italy

Tel +39 045 7611400  
Fax +39 045 7611444  
Site www.antonelloitalia.it  
Mail info@antonelloitalia.it

Concept | AntonelloItalia  
Photos | Master Fotografie  
| Andrea Pitari  
| Studio Campesato  
| Walter Gumiero  
Graphics | Galvani & Tremolada  
Styling | Sara Sarli  
| Stefania Rusalem  
Pre-press | Sprinter  
Press | Grafiche Duegi

I prodotti  
AntonelloItalia  
sono garantiti  
100% Made in Italy.

AntonelloItalia  
products are  
100% Made in Italy  
guaranteed.