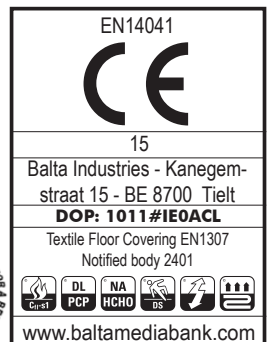
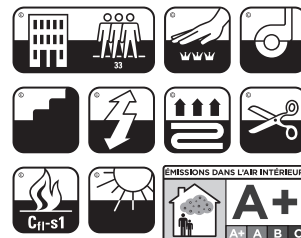
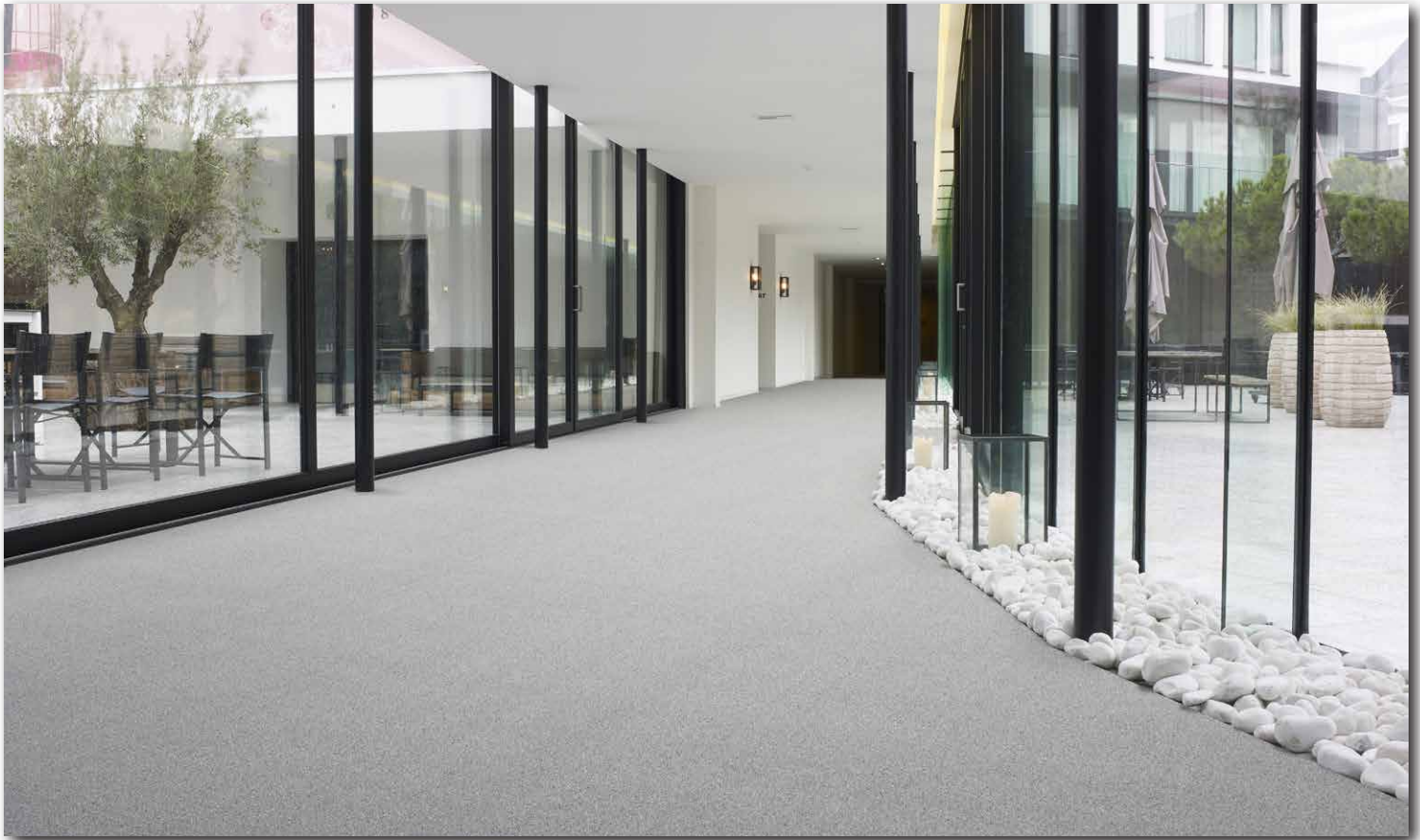


| | | | |
|--|---|--|---------------------------|
| CONSTRUCTION STRUCTURE STRUKTUR STRUCTUUR | Tufting 1/10" cut pile COC Tufté 1/10" velours COC Getuftet 1/10" COC Velours Getuft 1/10" velours COC | PERMANENTLY ANTISTATIC ANTISTATIC PERMANENT PERMANENT ANTISTATISCH PERMANENT ANTISTATISCH | ISO 6356 < 2 kV |
| PILE MATERIAL COMPOSITION DU VELOURS POLMATERIAL POOLMATERIAAL | 100% PA 6 IMPREL® | IMPACT NOISE RATING ISOLATION PHONIQUE TRITTSCHALLVERBESSERUNG GELUIDSISOLATIE | ISO 140-8 25 dB ΔLw |
| PRIMARY BACKING SUPPORT TRÄGERMATERIAL TUFTDOEK | Non woven PES Non tissé PES Vlies, PES Vilt, PES | SOUND ABSORPTION ABSORPTION PHONIQUE SCHALLABSORPTIONSGRAD GELUIDSABSORPTIE | ISO 354 0.15 αw |
| SECONDARY BACKING DOSSIER RÜCKEN TAPIJTRUG | Action Back | THERMAL RESISTANCE RÉSISTANCE THERMIQUE WÄRMEDURCHLASSWIDERSTAND WARMTEDOORLAATWEERSTAND | ISO 8302 0.08 m² K/W |
| PILE WEIGHT POIDS DU VELOURS POLEINSATZGEWICHT POOLGEWICHT | Ca. 1.100 gr/m² | FASTNESS TO LIGHT SOLIDITÉ A LA LUMIÈRE LICHTECHTHEIT LICHTECHTHEID | ISO 105-B02 ≥ 5-6 |
| TOTAL WEIGHT POIDS TOTAL GESAMTGEWICHT TOTAAL GEWICHT | Ca. 2.130 gr/m² | COLOUR FASTNESS TO WATER SOLIDITÉ À L'EAU WASSERECHEITHEIT WATERECHEITHEID | EN ISO 105-E01 ≥ 4-5 |
| PILE HEIGHT EPAISSEUR DU VELOURS POLHÖHE POOLHOOGTE | Ca. 4,6 mm | RUBBING FASTNESS SOLIDITÉ AU FROTTEMENT REIBECHTHEIT WRIJFECHTHEID | EN ISO 105-X12 ≥ 4 |
| TOTAL HEIGHT EPAISSEUR TOTAL GESAMTHÖHE TOTALE DIKTE | Ca. 7,4 mm | FIRE RESISTANCE COMPORTEMENT AU FEU BRENNVERHALTEN BRANDGEDRAG | EN 13501-1 Cfl-s1 |
| TUFT DENSITY NOMBRES DE POINTS NOPPENZAHL AANTAL PUNTEN | Ca. 230 100/m² | NUMBER OF COLOURS NOMBRES DE COULEURS ANZAHL FARBEN AANTAL KLEUREN | 14 |
| PILE DENSITY DENSITÉ DU VELOURS POLROHDICHTHEIT POOLDICHTHEID | Ca. 0.161 g/cm³ | WIDTH LARGEUR BREITE BREEDE | EN ISO 3018 ca. 400 cm |
| CLASSIFICATION CLASSEMENT KLASSIFIKATION CLASSIFICATIE | EN 1307 33 - LC3 | | |
| CASTOR CHAIR SUITABILITY CHAISE À ROULETTES STUHLROLLENEIGNUNG ROLSTOELGESCHIKTHEID | EN 985 A: intensive use | | |
| STAIR SUITABILITY ESCALIERS TREPPENEIGNUNG TRAPPENGESCHIKTHEID | EN 1963 A: intensive use | | |



hercules AB



▲ 77



▲ 99



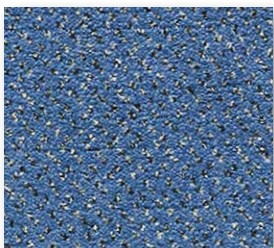
▲ 98



▲ 97



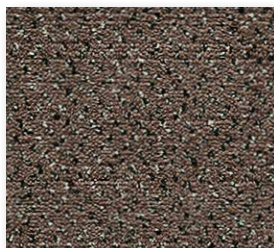
▲ 94



▲ 73



▲ 26



▲ 48



▲ 47



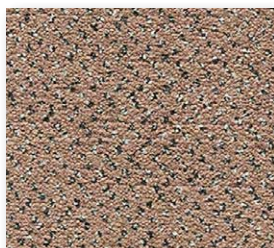
▲ 34



▲ 11



▲ 65



▲ 43



▲ 37